

## General Information

### Gene Name Synonym

Cytotoxic T-lymphocyte-associated antigen 8

### Protein Construction

A DNA sequence encoding the mature form of human IL17A(Q16552) (Ile20-Ala155) was expressed with a N-terminal Met.

### Organism

Human

### Expression Host

CHO Cells

## QC Testing

### Activity

1. Measured by its binding ability in a functional ELISA. Immobilized human IL17A (cat:503644) at 10 µg/ml (100 µl/well) can bind human IL17Ra (Cat:503306), The EC<sub>50</sub> of human IL17Ra (Cat:503306) is 20.0-48.0 ng/ml.
2. Measured by its ability to induce IL-6 secretion by HFF human foreskin fibroblast cells. The ED<sub>50</sub> for this effect is typically 1-4 ng/mL.

### Purity

(16.9+21.7+50.1) % as determined by SDS-PAGE

### Endotoxin

< 1.0 EU per µg of the protein as determined by the LAL method

### Stability

Samples are stable for up to twelve months from date of receipt at -70°C

### Predicted N terminal

Met

### Molecular Mass

The recombinant human IL17A consists of 137 amino acids and predicts a molecular mass of 15.7 KDa. It migrates as an approximately 16, 19, and 20 KDa band in SDS-PAGE under reducing conditions due to glycosylation.

### Formulation

Lyophilized from sterile PBS, pH 7.4.

1. 5 % trehalose and mannitol are added as protectants before lyophilization.

2. Please contact us for any concerns or special requirements.

## Usage Guide

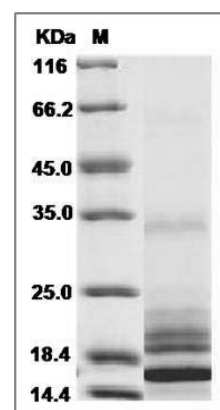
### Storage

Store it under sterile conditions at -20°C to -80°C. It is recommended that the protein be aliquoted for optimal storage. Avoid repeated freeze-thaw cycles.

### Reconstitution

Adding sterile water, prepare a stock solution of 0.25 mg/ml. Concentration is measured by UV-Vis.

### SDS-PAGE



Human IL17 / IL17A Protein SDS-PAGE