

General Information

Gene Name Synonym

Proto-oncogene Neu; Proto-oncogene c-ErbB-2; p185erbB2

Protein Construction

A DNA sequence encoding the mouse ERBB2 (P70424) extracellular domain (Met 1-Thr 653) was fused with the Fc region of human IgG1 at the C-terminus.

Organism

Mouse

Expression Host

Human Cells

QC Testing

Purity

> 90 % as determined by SDS-PAGE

Endotoxin

< 1.0 EU per μg of the protein as determined by the LAL method

Stability

Samples are stable for up to twelve months from date of receipt at -70°C

Predicted N terminal

Thr 23

Molecular Mass

The secreted recombinant mouse ERBB2/Fc is a

disulfide-linked homodimer. The reduced monomer comprises 872 amino acids and has a calculated molecular mass of 96.7 kDa. As a result of glycosylation, the apparent molecular mass of the recombinant protein is approximately 120-130 kDa in SDS-PAGE under reducing conditions.

Formulation

Lyophilized from sterile PBS, pH 7.4

1. 5 % trehalose and mannitol are added as protectants before lyophilization.

2. Please contact us for any concerns or special requirements.

Usage Guide

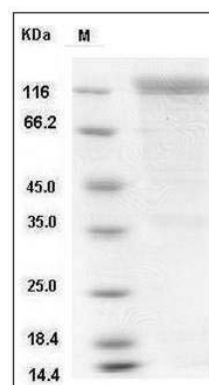
Storage

Store it under sterile conditions at -20°C to -80°C . It is recommended that the protein be aliquoted for optimal storage. Avoid repeated freeze-thaw cycles.

Reconstitution

Adding sterile water, prepare a stock solution of 0.25 mg/ml. Concentration is measured by UV-Vis.

SDS-PAGE



Mouse HER2 / ErbB2 Protein (Fc Tag) SDS-PAGE