

# Anti-MRPS26 Rabbit antibody



Catalog Number: 166934

## Product name

WB, ICC/IF

Anti-MRPS26 Rabbit antibody

## Dilutions

## Specificity

WB: 1/1000

Human

ICC/IF: 1/50

## Antibody description

MRPS26 Rabbit polyclonal antibody

## Preparation

Antigen: Recombinant protein of human MRPS26

## Formulation

Supplied in 50nM Tris-Glycine(pH 7.4), 0.15M NaCl, 40%Glycerol, 0.01% sodium azide and 0.05% BSA.

## Storage

Store at -20°C. Stable for 12 months from date of receipt.

## Clonality

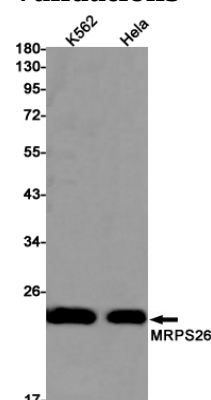
Polyclonal

## Ig Type

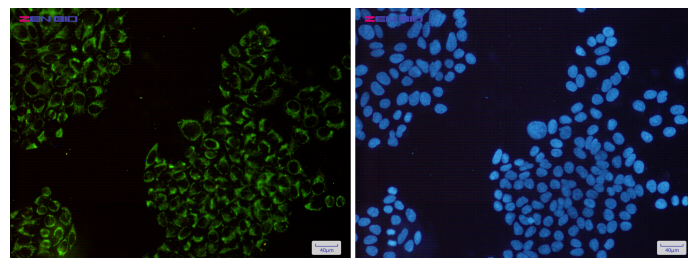
Rabbit IgG

## Applications

## Validations



Western blot detection of MRPS26 in K562, HeLa cell lysates using MRPS26 Rabbit pAb(1:1000 diluted). Predicted band size: 24kDa. Observed band size: 24kDa.



Immunocytochemistry of MRPS26(green) in HeLa cells using MRPS26 Rabbit pAb at dilution 1/50, and DAPI(blue)