

# TIMM50 antibody



Catalog Number: 116134

## Product name

TIMM50 antibody

WB: 1:500-1:5000

IP: 1:500-1:5000

## Specificity

Human, Rat; other species not tested.

IHC: 1:20-1:200

IF: 1:50-1:500

## Antibody description

TIMM50 Rabbit Polyclonal antibody. Positive IHC detected in human kidney tissue, human liver tissue. Positive IF detected in HepG2 cells. Positive WB detected in HeLa cells, HEK-293 cells, HepG2 cells, rat kidney tissue. Positive IP detected in HeLa cells. Observed molecular weight by Western-blot: 35-40 kDa

## Preparation

This antibody was obtained by immunization of TIMM50 recombinant protein (Accession Number: BC121147). Purification method: Antigen Affinity purified.

## Formulation

PBS with 0.02% sodium azide and 50% glycerol pH 7.3.

## Storage

Store at -20°C. DO NOT ALIQUOT

## Clonality

Polyclonal

## Ig Type

Rabbit IgG

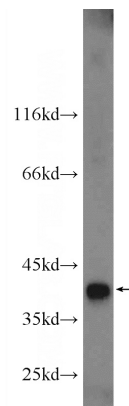
## Applications

ELISA, WB, IHC, IP, IF

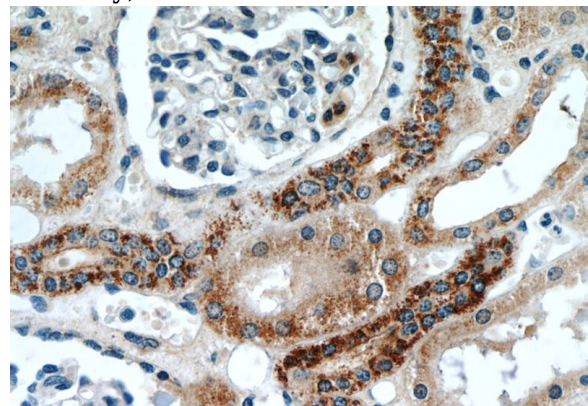
## Dilutions

Recommended Dilution:

## Validations



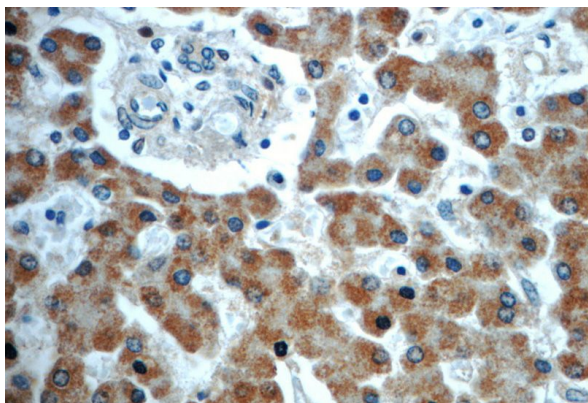
HeLa cells were subjected to SDS PAGE followed by western blot with Catalog No:116134(TIMM50 antibody) at dilution of 1:1000



Immunohistochemistry of paraffin-embedded human kidney slide using Catalog No:116134(TIMM50 Antibody) at dilution of 1:50

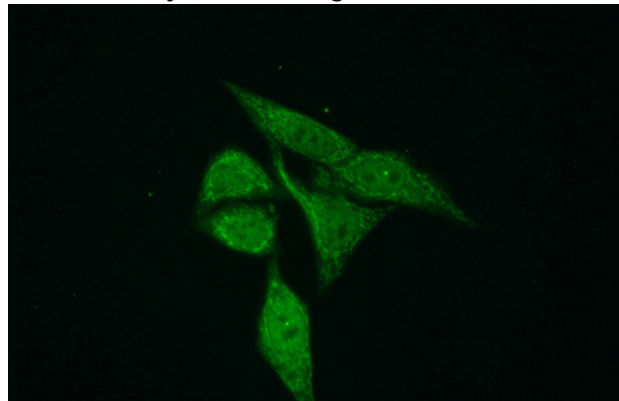
# TIMM50 antibody

Catalog Number: 116134



Immunohistochemistry of paraffin-embedded human liver slide using Catalog No:116134(TIMM50 Antibody) at dilution of 1:50

IP Result of anti-TIMM50 (IP:Catalog No:116134, 4ug; Detection:Catalog No:116134 1:1000) with HeLa cells lysate 3200ug.



Immunofluorescent analysis of (10% Formaldehyde) fixed HepG2 cells using Catalog No:116134(TIMM50 Antibody) at dilution of 1:50 and Alexa Fluor 488-conjugated AffiniPure Goat Anti-Rabbit IgG(H+L)

