

# KRT6B antibody



Catalog Number: 112134

## Product name

KRT6B antibody

## Immunogen

[Human KRT6B Recombinant protein \(GST tag & His tag\)](#)

## Specificity

Human, Mouse, Rat; other species not tested.

## Antibody description

KRT6B Rabbit Polyclonal antibody. Positive IP detected in mouse skin tissue. Positive WB detected in mouse skin tissue, A431 cells. Positive IHC detected in human cervix tissue, human oesophagus tissue, human tonsil tissue. Observed molecular weight by Western-blot: 60 kDa

## Preparation

This antibody was obtained by immunization of KRT6B recombinant protein (Accession Number: NM\_005555). Purification method: Antigen affinity purified.

## Formulation

PBS with 0.02% sodium azide and 50% glycerol pH 7.3.

## Storage

Store at -20°C. DO NOT ALIQUOT

## Clonality

Polyclonal

## Ig Type

Rabbit IgG

## Applications

ELISA, WB, IHC, IP

## Dilutions

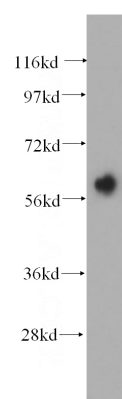
Recommended Dilution:

WB: 1:500-1:5000

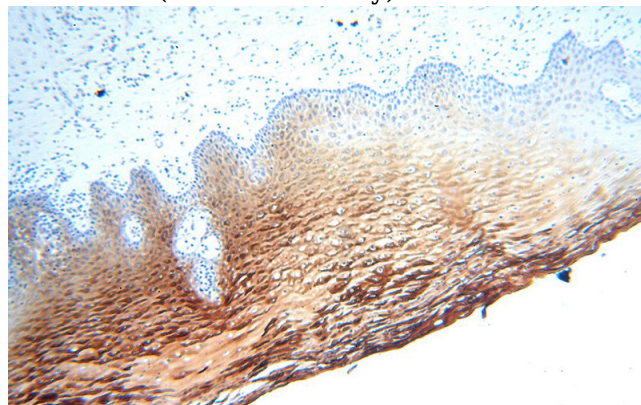
IP: 1:200-1:2000

IHC: 1:20-1:200

## Validations



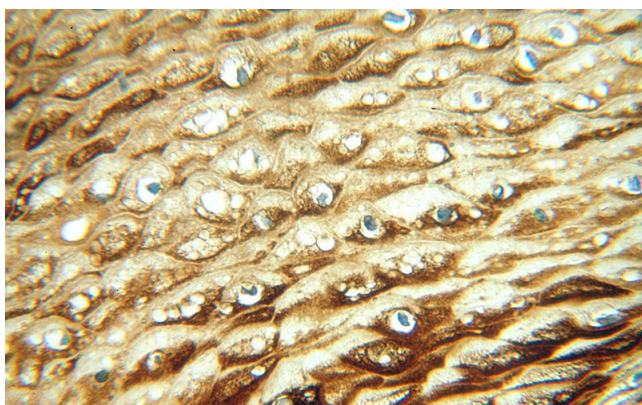
mouse skin tissue were subjected to SDS PAGE followed by western blot with Catalog No:112134(KRT6B antibody) at dilution of 1:1000



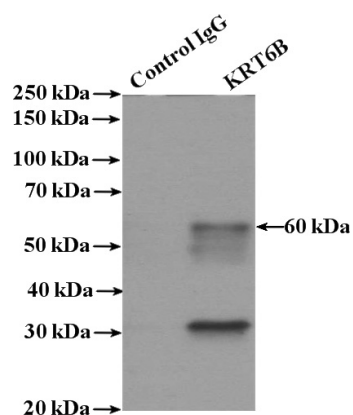
Immunohistochemical of paraffin-embedded human cervix using Catalog No:112134(KRT6B antibody) at dilution of 1:100 (under 10x lens)

# KRT6B antibody

Catalog Number: 112134



Immunohistochemical of paraffin-embedded human cervix using Catalog No:112134(KRT6B antibody) at dilution of 1:100 (under 40x lens)



IP Result of anti-KRT6B (IP:Catalog No:112134, 4ug; Detection:Catalog No:112134 1:800) with mouse skin tissue lysate 3200ug.