

# Anti-phospho-RSK1 p90 (Ser380) Rabbit antibody



Catalog Number: 167834

## Product name

Rabbit IgG

Anti-phospho-RSK1 p90 (Ser380) Rabbit antibody

## Applications

## Specificity

WB, ICC/IF, IP

Human, Mouse, Rat

## Dilutions

## Antibody description

WB: 1/2000

phospho-RSK1 p90 (Ser380) Rabbit monoclonal antibody

ICC/IF: 1/50

## Preparation

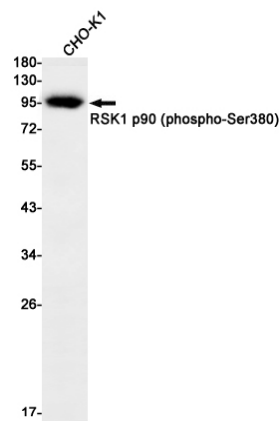
IP: 1/20

Antigen: A synthetic phosphopeptide corresponding to residues surrounding Ser380 of human RSK1 p90

## Validations

## Formulation

50nM Tris-Glycine(pH 7.4), 0.15M NaCl, 40%Glycerol, 0.01% sodium azide and 0.05% BSA



## Storage

Store at 4°C short term. Store at -20°C long term. Avoid freeze / thaw cycle.

## Clonality

Monoclonal

Western blot detection of RSK1 p90 (phospho-Ser380) in CHO-K1 cell lysates using RSK1 p90 (phospho-Ser380) Rabbit mAb(1:1000 diluted). Predicted band size:83kDa. Observed band size:83kDa.

## Ig Type