

# BCO2 antibody

Catalog Number: 108434

## Product name

BCO2 antibody

IHC: 1:20-1:200

IF: 1:20-1:200

## Specificity

Human, Mouse, Rat; other species not tested.

## Antibody description

BCO2 Rabbit Polyclonal antibody. Positive IF detected in HepG2 cells. Positive IHC detected in human liver cancer tissue. Positive WB detected in L02 cells, human liver tissue, mouse liver tissue. Observed molecular weight by Western-blot: 60-65kd

## Preparation

This antibody was obtained by immunization of BCO2 recombinant protein (Accession Number: NM\_001256398). Purification method: Antigen affinity purified.

## Formulation

PBS with 0.02% sodium azide and 50% glycerol pH 7.3.

## Storage

Store at -20°C. DO NOT ALIQUOT

## Clonality

Polyclonal

## Ig Type

Rabbit IgG

## Applications

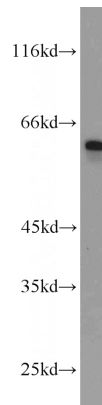
ELISA, WB, IHC, IF

## Dilutions

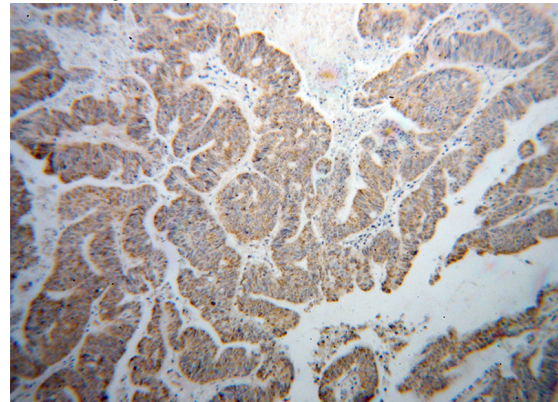
Recommended Dilution:

WB: 1:200-1:2000

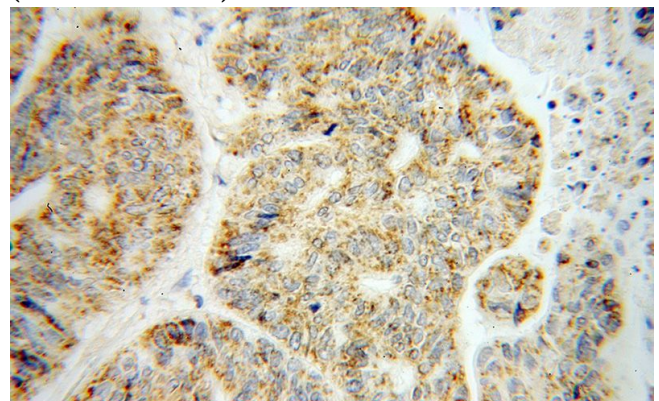
## Validations



L02 cells were subjected to SDS PAGE followed by western blot with Catalog No:117107(BCO2 antibody) at dilution of 1:800



Immunohistochemical of paraffin-embedded human liver cancer using Catalog No:117107(BCO2 antibody) at dilution of 1:50 (under 10x lens)



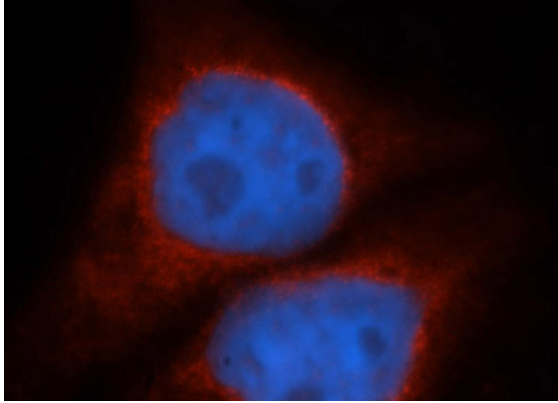
Immunohistochemical of paraffin-embedded

# BCO2 antibody

Catalog Number: 108434

---

human liver cancer using Catalog  
No:117107(BCO2 antibody) at dilution of 1:50  
(under 40x lens)



Immunofluorescent analysis of HepG2 cells, using  
BCO2 antibody Catalog No:117107 at 1:50  
dilution and Rhodamine-labeled goat anti-rabbit  
IgG (red). Blue pseudocolor = DAPI (fluorescent  
DNA dye).