

CTHRC1 antibody



Catalog Number: 109724

Product name

CTHRC1 antibody

WB: 1:500-1:5000

IP: 1:200-1:2000

Specificity

Human, Mouse, Rat; other species not tested.

IHC: 1:20-1:200

Antibody description

CTHRC1 Rabbit Polyclonal antibody. Positive WB detected in A375 cells, HEK-293 cells, Jurkat cells, mouse brain tissue, mouse lung tissue, rat lung tissue. Positive IP detected in A375 cells. Positive IHC detected in human breast cancer tissue. Observed molecular weight by Western-blot: 30 kDa

Preparation

This antibody was obtained by immunization of CTHRC1 recombinant protein (Accession Number: NM_138455). Purification method: Antigen affinity purified.

Formulation

PBS with 0.02% sodium azide and 50% glycerol pH 7.3.

Storage

Store at -20°C. DO NOT ALIQUOT

Clonality

Polyclonal

Ig Type

Rabbit IgG

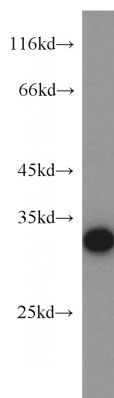
Applications

ELISA, WB, IHC, IP

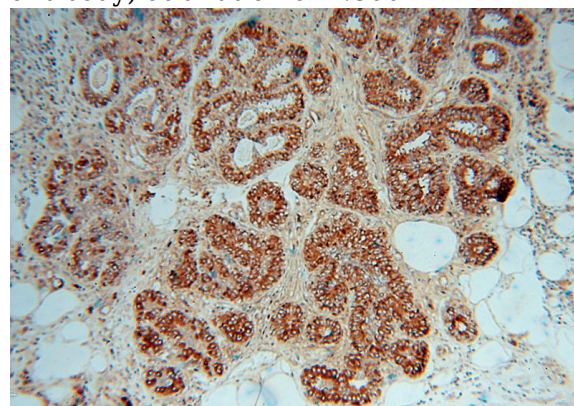
Dilutions

Recommended Dilution:

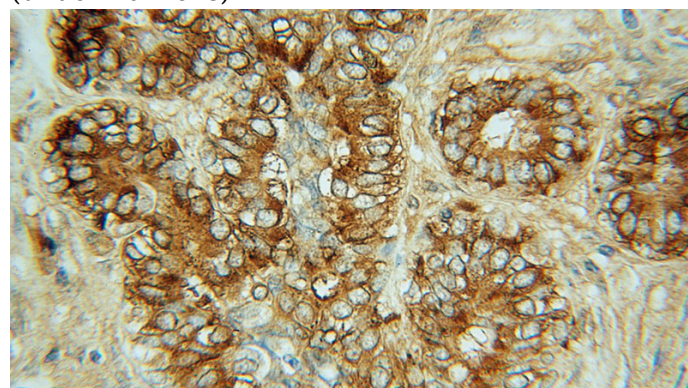
Validations



A375 cells were subjected to SDS PAGE followed by western blot with Catalog No:109724(CTHRC1 antibody) at dilution of 1:800



Immunohistochemical of paraffin-embedded human breast cancer using Catalog No:109724(CTHRC1 antibody) at dilution of 1:50 (under 10x lens)

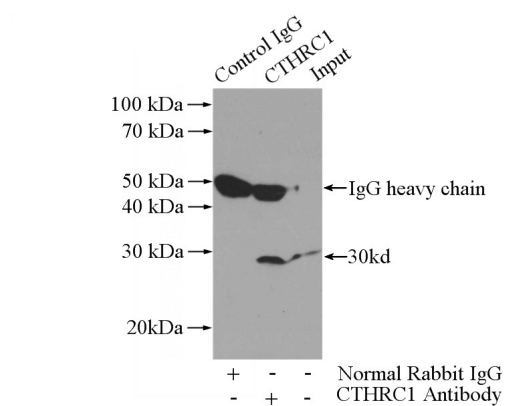


CTHRC1 antibody



Catalog Number: 109724

Immunohistochemical of paraffin-embedded human breast cancer using Catalog No:109724(CTHRC1 antibody) at dilution of 1:50 (under 40x lens)



IP Result of anti-CTHRC1 (IP:Catalog No:109724, 3ug; Detection:Catalog No:109724 1:500) with A375 cells lysate 3600ug.