

# SRSF1 Polyclonal Antibody

Catalog Number: 163224

## Product name

SRSF1 Polyclonal Antibody

## Specificity

Human, Mouse, Rat

## Antibody description

Polyclonal antibody to SRSF1

## Preparation

Antigen: Recombinant fusion protein containing a sequence corresponding to amino acids 1-248 of human SRSF1 (NP\_008855.1).

## Formulation

PBS with 0.02% sodium azide, 50% glycerol, pH7.3.

## Storage

Store at -20°C. Avoid freeze / thaw cycles.

## Clonality

Polyclonal

## Ig Type

Rabbit IgG

## Applications

WB, IHC, IF

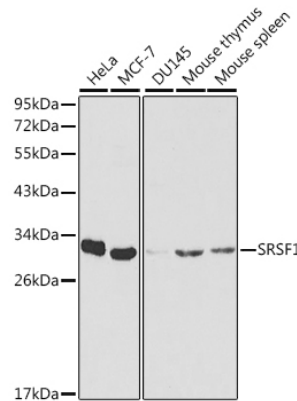
## Dilutions

WB 1:500 - 1:2000

IHC 1:50 - 1:200

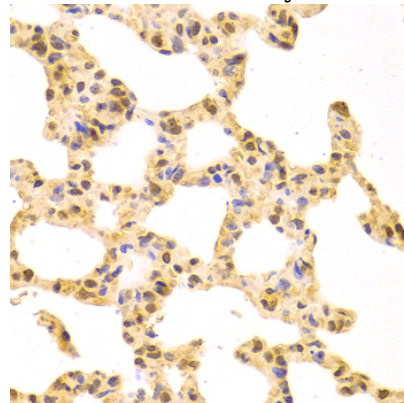
IF 1:50 - 1:200

## Validations



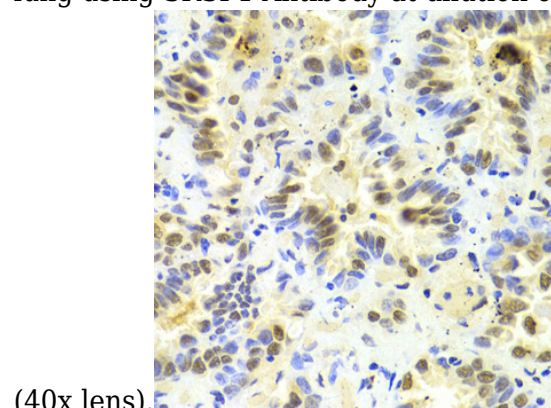
## Western blot - SRSF1 Polyclonal Antibody

Western blot analysis of extracts of various cell lines, using SRSF1 antibody at 1:1000 dilution. Secondary antibody: HRP Goat Anti-Rabbit IgG (H+L) at 1:10000 dilution. Lysates/proteins: 25ug per lane. Blocking buffer: 3% nonfat dry milk in TBST.



## Immunohistochemistry - SRSF1 Polyclonal Antibody

Immunohistochemistry of paraffin-embedded rat lung using SRSF1 Antibody at dilution of 1:100



# SRSF1 Polyclonal Antibody

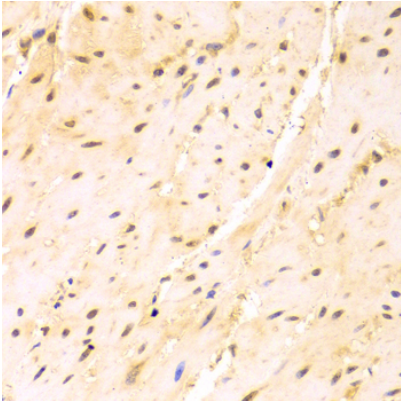


Catalog Number: 163224

---

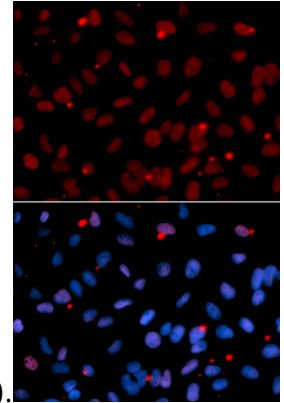
Immunohistochemistry - SRSF1 Polyclonal Antibody

Immunohistochemistry of paraffin-embedded human lung cancer using SRSF1 Antibody at dilution of 1:100 (40x lens).



Immunohistochemistry - SRSF1 Polyclonal Antibody

Immunohistochemistry of paraffin-embedded mouse esophagus using SRSF1 Antibody at



dilution of 1:100 (40x lens).

Immunofluorescence - SRSF1 Polyclonal Antibody

Immunofluorescence analysis of U2OS cells using SRSF1 antibody . Blue: DAPI for nuclear staining.