

# ATP1A Polyclonal Antibody



Catalog Number: 160124

## Product name

ATP1A Polyclonal Antibody

## Specificity

Human

## Antibody description

Polyclonal antibody to ATP1A

## Preparation

Antigen: Recombinant fusion protein containing a sequence corresponding to amino acids 551-850 of human ATP1A (NP\_000692.2).

## Formulation

PBS with 0.02% sodium azide, 50% glycerol, pH7.3.

## Storage

Store at -20°C. Avoid freeze / thaw cycles.

## Clonality

Polyclonal

## Ig Type

Rabbit IgG

## Applications

WB, IHC, IP

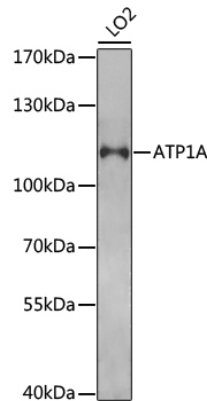
## Dilutions

WB 1:500 - 1:1000

IHC 1:50 - 1:200

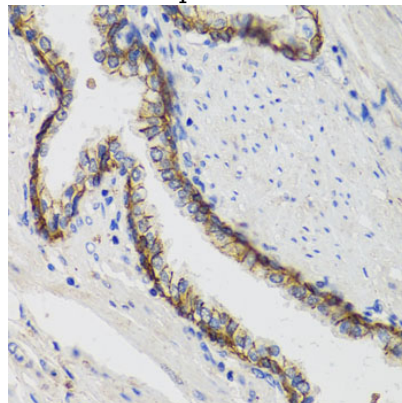
IP 1:50 - 1:100

## Validations



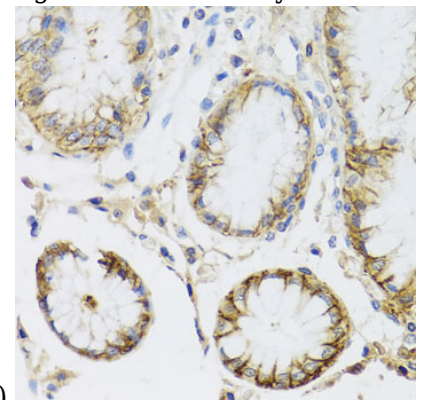
## Western blot - ATP1A Polyclonal Antibody

Western blot analysis of extracts of LO2 cells, using ATP1A1 Antibody at 1:1000 dilution. Secondary antibody: HRP Goat Anti-Rabbit IgG (H+L) at 1:10000 dilution. Lysates/proteins: 25ug per lane. Blocking buffer: 3% nonfat dry milk in TBST. Detection: ECL Basic Kit. Exposure time: 30s.



## Immunohistochemistry - ATP1A Polyclonal Antibody

Immunohistochemistry of paraffin-embedded human prostate using ATP1A1 antibody at dilution



of 1:100 (40x lens).

# ATP1A Polyclonal Antibody

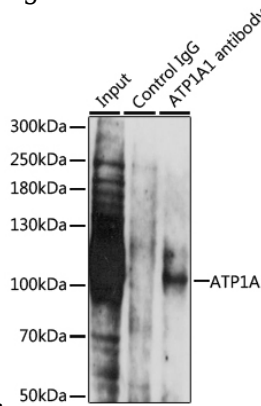


Catalog Number: 160124

## Immunohistochemistry - ATP1A Polyclonal Antibody

Immunohistochemistry of paraffin-embedded human stomach using ATP1A1 antibody at dilution

of 1:100 (40x lens).



## Immunoprecipitation - ATP1A Polyclonal Antibody

Immunoprecipitation analysis of 200ug extracts of LO2 cells, using 3 ug ATP1A1 antibody . Western blot was performed from the immunoprecipitate using ATP1A1 antibody at a dilution of 1:1000.