

WDR61 antibody



Catalog Number: 116814

Product name

WDR61 antibody

Immunogen

[Human WDR61 Recombinant protein \(His tag\)](#)

Specificity

Human, Mouse, Rat; other species not tested.

Antibody description

WDR61 Rabbit Polyclonal antibody. Positive IF detected in HeLa cells. Positive IHC detected in human testis tissue, human breast cancer tissue. Positive WB detected in mouse liver tissue, HeLa cells, HepG2 cells, mouse brain tissue, Raji cells. Positive IP detected in mouse brain tissue. Observed molecular weight by Western-blot: 33 kDa

Preparation

This antibody was obtained by immunization of WDR61 recombinant protein (Accession Number: NM_025234). Purification method: Antigen affinity purified.

Formulation

PBS with 0.02% sodium azide and 50% glycerol pH 7.3.

Storage

Store at -20°C. DO NOT ALIQUOT

Clonality

Polyclonal

Ig Type

Rabbit IgG

Applications

ELISA, WB, IHC, IF, IP

Dilutions

Recommended Dilution:

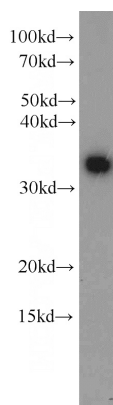
WB: 1:500-1:5000

IP: 1:500-1:5000

IHC: 1:20-1:200

IF: 1:10-1:100

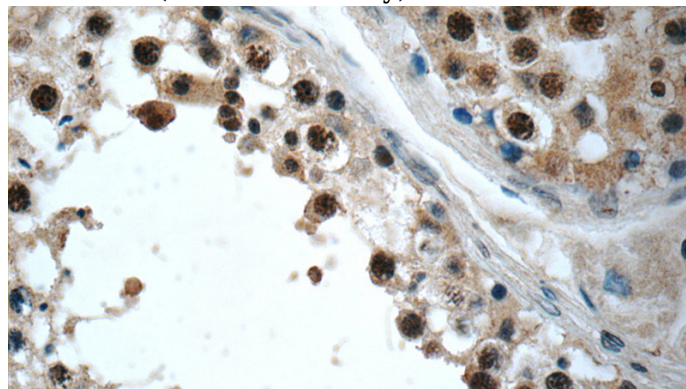
Validations



mouse liver tissue were subjected to SDS PAGE followed by western blot with Catalog No:116814(WDR61 antibody) at dilution of 1:1000



Immunohistochemistry of paraffin-embedded human breast cancer slide using Catalog No:116814(WDR61 Antibody) at dilution of 1:50

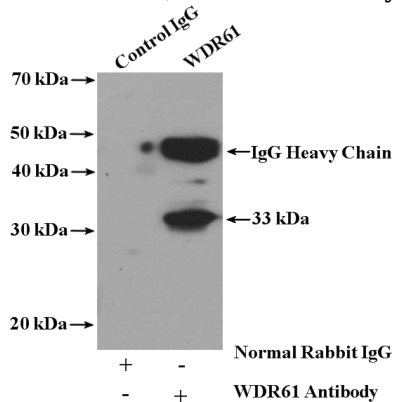


Immunohistochemistry of paraffin-embedded human testis slide using Catalog

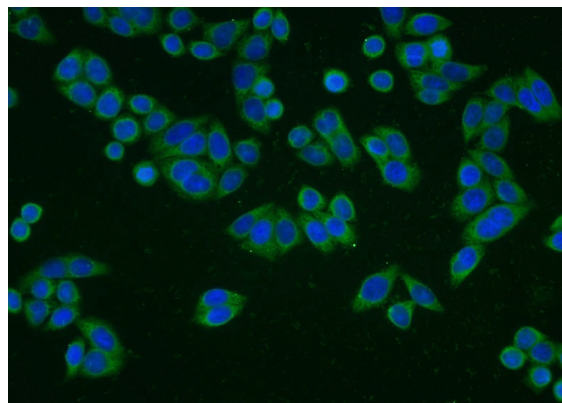
WDR61 antibody

Catalog Number: 116814

No:116814(WDR61 Antibody) at dilution of 1:50



IP Result of anti-WDR61 (IP:Catalog No:116814, 4ug; Detection:Catalog No:116814 1:1000) with mouse brain tissue lysate 4000ug.



Immunofluorescent analysis of HeLa cells using Catalog No:116814(WDR61 Antibody) at dilution of 1:25 and Alexa Fluor 488-conjugated AffiniPure Goat Anti-Rabbit IgG(H+L)