

Anti-ATM Rabbit antibody



Catalog Number: 168604

Product name

Anti-ATM Rabbit antibody

Specificity

Human

Antibody description

ATM Rabbit monoclonal antibody

Preparation

Antigen: A synthetic peptide of human ATM

Formulation

50nM Tris-Glycine(pH 7.4), 0.15M NaCl, 40%Glycerol, 0.01% sodium azide and 0.05% BSA.

Storage

Store at 4°C short term. Store at -20°C long term. Avoid freeze / thaw cycle.

Clonality

Monoclonal

Ig Type

Rabbit IgG

Applications

WB, IHC-P, ICC/IF, FC

Dilutions

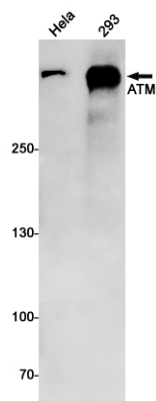
WB: 1/2000

IHC: 1/20

ICC/IF: 1/50

FC: 1/20

Validations



Western blot detection of ATM in HeLa,293 cell lysates using ATM Rabbit mAb(1:1000 diluted).Predicted band size:351kDa.Observed band size:351kDa.