

Anti-SAE1 Rabbit antibody



Catalog Number: 168904

Product name

Anti-SAE1 Rabbit antibody

Dilutions

1:2000-1:10000

Specificity

1:100

Human, Rat

1:50

Antibody description

1:20

SAE1 Rabbit monoclonal antibody

Preparation

Antigen: A synthetic peptide of human SAE1

Formulation

Supplied in 50nM Tris-Glycine(pH 7.4), 0.15M NaCl, 40%Glycerol, 0.01% sodium azide and 0.05% BSA.

Storage

Store at 4°C short term. Aliquot and store at -20°C long term. Avoid freeze / thaw cycle.

Clonality

Monoclonal

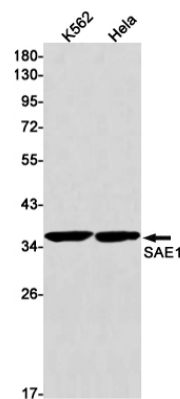
Ig Type

Rabbit IgG

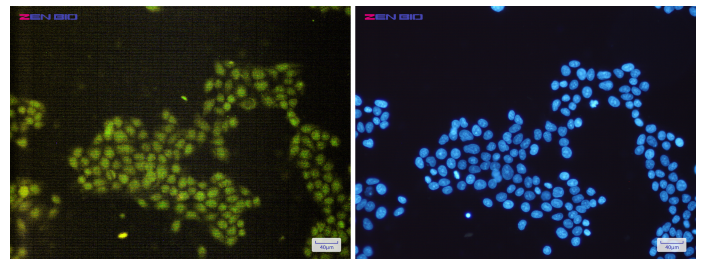
Applications

WB, ICC/IF, FC, IP

Validations



Western blot detection of SAE1 in K562, HeLa cell lysates using SAE1 Rabbit mAb(1:1000 diluted). Predicted band size: 39kDa. Observed band size: 39kDa.



Immunocytochemistry of SAE1 (green) in HeLa cells using SAE1 Rabbit mAb at dilution 1/200, and DAPI (blue)