

# CP110 antibody



Catalog Number: 109504

## Product name

CP110 antibody

## Immunogen

[Human CP110 Recombinant protein \(GST tag & His tag\)](#)

## Specificity

Human, Mouse, Rat; other species not tested.

## Antibody description

CP110 Rabbit Polyclonal antibody. Positive FC detected in HeLa cells. Positive IF detected in MEF/HeLa cells. Positive IHC detected in human prostate cancer tissue. Positive IP detected in HeLa cells. Positive WB detected in HeLa cells, K-562 cells. Observed molecular weight by Western-blot: 113kd

## Preparation

This antibody was obtained by immunization of CP110 recombinant protein (Accession Number: NM\_001323572). Purification method: Antigen affinity purified.

## Formulation

PBS with 0.02% sodium azide and 50% glycerol pH 7.3.

## Storage

Store at -20°C. DO NOT ALIQUOT

## Clonality

Polyclonal

## Ig Type

Rabbit IgG

## Applications

ELISA, WB, IHC, IF, IP, FC

## Dilutions

Recommended Dilution:

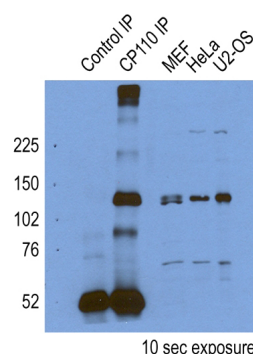
WB: 1:500-1:5000

IP: 1:500-1:5000

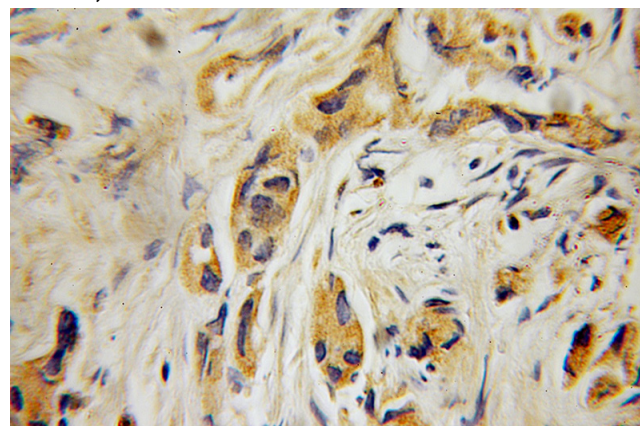
IHC: 1:20-1:200

IF: 1:20-1:200

## Validations



IP result of CP110(Catalog No:109504) by Dr. Corbit, Kevin.

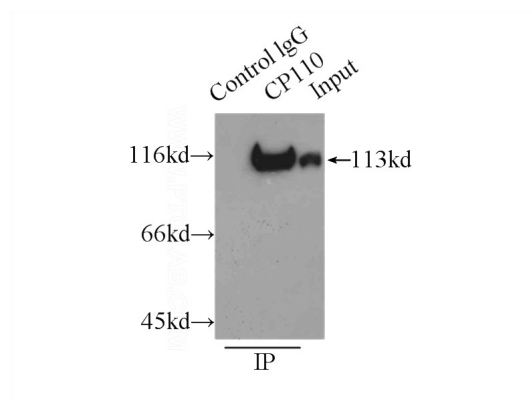
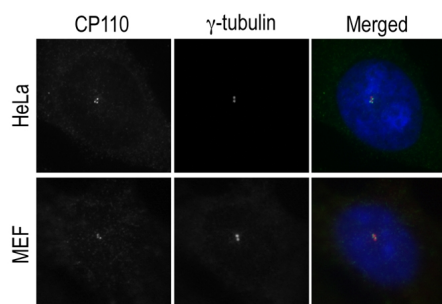


Immunohistochemical of paraffin-embedded human prostate cancer using Catalog No:109504(CP110 antibody) at dilution of 1:100 (under 10x lens)

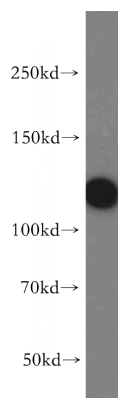
# CP110 antibody



Catalog Number: 109504



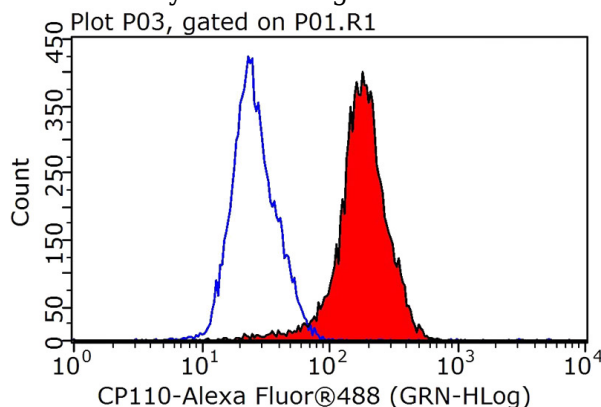
IF result(Centrioles) of anti-CP110(Catalog



No:109504) by Dr. Corbit Kevin.

HeLa cells were subjected to SDS PAGE followed by western blot with Catalog No:109504(CP110 antibody) at dilution of 1:400

IP Result of anti-CP110 (IP:Catalog No:109504, 3ug; Detection:Catalog No:109504 1:1000) with HeLa cells lysate 3000ug.



1X10<sup>6</sup> HeLa cells were stained with .2ug CP110 antibody (Catalog No:109504, red) and control antibody (blue). Fixed with 4% PFA blocked with 3% BSA (30 min). Alexa Fluor 488-conjugated AffiniPure Goat Anti-Rabbit IgG(H+L) with dilution 1:1000.