

PHD2 antibody



Catalog Number: 113804

Product name

PHD2 antibody

IHC: 1:20-1:200

IF: 1:10-1:100

Specificity

Human, Mouse; other species not tested.

Antibody description

PHD2 Rabbit Polyclonal antibody. Positive IF detected in HepG2 cells. Positive IHC detected in human pancreas tissue, human heart tissue. Positive WB detected in HEK-293 cells, mouse pancreas tissue. Observed molecular weight by Western-blot: 46kd,36kd

Preparation

This antibody was obtained by immunization of Peptide (Accession Number: NM_022051).
Purification method: Antigen affinity purified.

Formulation

PBS with 0.02% sodium azide and 50% glycerol
pH 7.3.

Storage

Store at -20°C. DO NOT ALIQUOT

Clonality

Polyclonal

Ig Type

Rabbit IgG

Applications

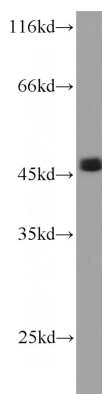
ELISA, WB, IHC, IF

Dilutions

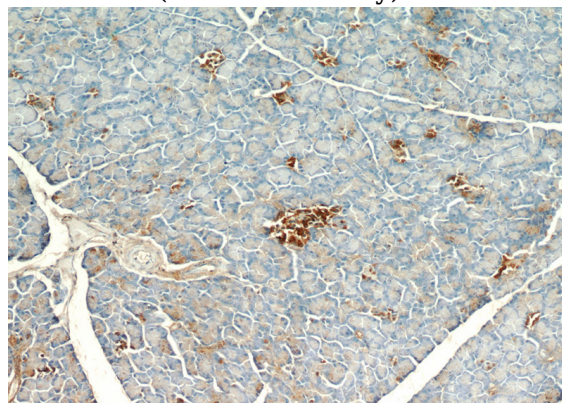
Recommended Dilution:

WB: 1:200-1:2000

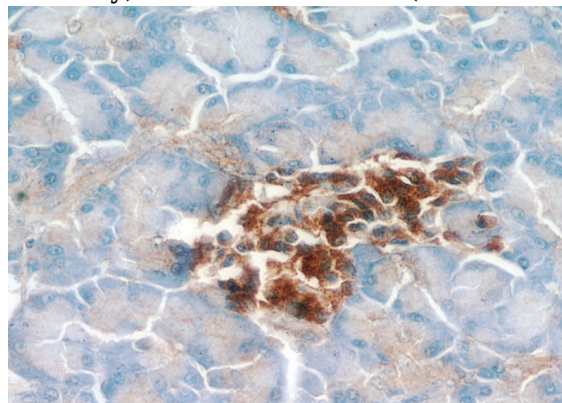
Validations



HEK-293 cells were subjected to SDS PAGE followed by western blot with Catalog No:113804(EGLN1 antibody) at dilution of 1:800



Immunohistochemical of paraffin-embedded human pancreas using Catalog No:113804(EGLN1 antibody) at dilution of 1:100 (under 10x lens)

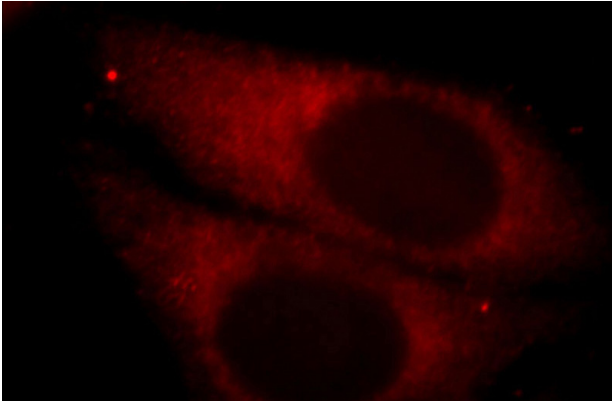


Immunohistochemical of paraffin-embedded human pancreas using Catalog No:113804(EGLN1 antibody) at dilution of 1:100 (under 10x lens)

PHD2 antibody

Catalog Number: 113804

antibody) at dilution of 1:100 (under 40x lens)



Immunofluorescent analysis of HepG2 cells, using EGLN1 antibody Catalog No:113804 at 1:25 dilution and Rhodamine-labeled goat anti-rabbit IgG (red).