

# Anti-PKC delta Rabbit antibody



Catalog Number: 169004

## Product name

Rabbit IgG

Anti-PKC delta Rabbit antibody

## Applications

## Specificity

WB, IHC-P, ICC/IF, FC

Human, Mouse, Rat

## Dilutions

## Antibody description

1:1000

PKC delta Rabbit monoclonal antibody

1:20-1:500

## Preparation

1:100

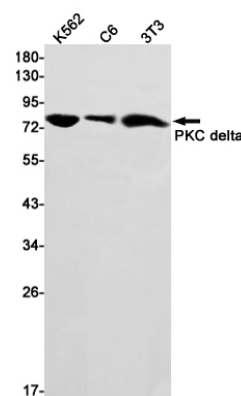
Antigen: Recombinant protein of human PKC delta

1:50

## Formulation

Supplied in 50nM Tris-Glycine(pH 7.4), 0.15M NaCl, 40%Glycerol, 0.01% sodium azide and 0.05% BSA.

## Validations



## Storage

Store at 4°C short term. Aliquot and store at -20°C long term. Avoid freeze / thaw cycle.

Western blot detection of PKC delta in K562,C6,3T3 cell lysates using PKC delta Rabbit mAb(1:1000 diluted).Predicted band size:78kDa.Observed band size:78kDa.

## Clonality

Monoclonal

## Ig Type