

YTHDC2 Polyclonal Antibody



Catalog Number: 162393

Product name

YTHDC2 Polyclonal Antibody

Specificity

Human, Mouse

Antibody description

Polyclonal antibody to YTHDC2

Preparation

Antigen: Recombinant fusion protein containing a sequence corresponding to amino acids 1131-1430 of human YTHDC2 (NP_073739.3).

Formulation

PBS with 0.02% sodium azide, 50% glycerol, pH7.3.

Storage

Store at -20°C. Avoid freeze / thaw cycles.

Clonality

Polyclonal

Ig Type

Rabbit IgG

Applications

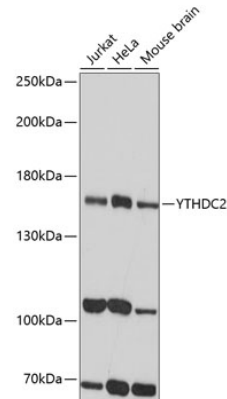
WB, IF

Dilutions

WB 1:500 - 1:2000

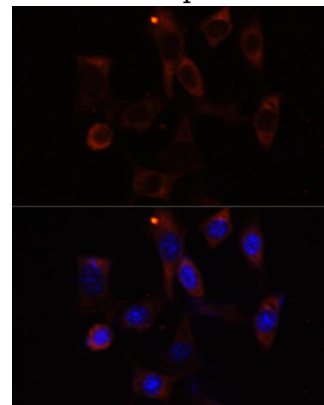
IF 1:50 - 1:200

Validations



Western blot - YTHDC2 Polyclonal Antibody

Western blot analysis of extracts of various cell lines, using YTHDC2 antibody at 1:1000 dilution. Secondary antibody: HRP Goat Anti-Rabbit IgG (H+L) at 1:10000 dilution. Lysates/proteins: 25ug per lane. Blocking buffer: 3% nonfat dry milk in TBST. Detection: ECL Basic Kit. Exposure time: 60s.



Immunofluorescence - YTHDC2 Polyclonal Antibody

Immunofluorescence analysis of NIH/3T3 cells using YTHDC2 antibody at dilution of 1:100. Blue: DAPI for nuclear staining.