

C20orf149 antibody



Catalog Number: 108693

Product name

C20orf149 antibody

Immunogen

[Human C20orf149 Recombinant protein \(GST tag & His tag\)](#)

Specificity

Human, Mouse; other species not tested.

Antibody description

C20orf149 Rabbit Polyclonal antibody. Positive WB detected in mouse pancreas tissue. Positive IHC detected in human colon tissue, human pancreas tissue. Positive IF detected in Hela cells. Observed molecular weight by Western-blot: 10-12kd

Preparation

This antibody was obtained by immunization of C20orf149 recombinant protein (Accession Number: NM_024299). Purification method: Antigen affinity purified.

Formulation

PBS with 0.02% sodium azide and 50% glycerol pH 7.3.

Storage

Store at -20°C. DO NOT ALIQUOT

Clonality

Polyclonal

Ig Type

Rabbit IgG

Applications

ELISA, WB, IHC, IF

Dilutions

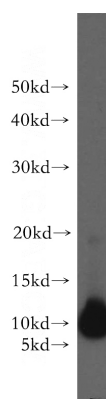
Recommended Dilution:

WB: 1:500-1:5000

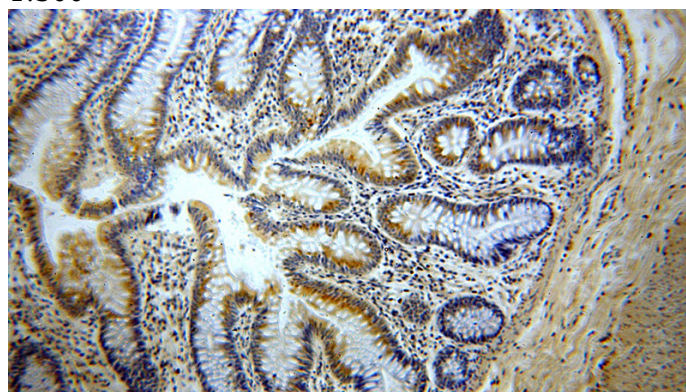
IHC: 1:20-1:200

IF: 1:10-1:100

Validations



mouse pancreas tissue were subjected to SDS PAGE followed by western blot with Catalog No:108693(C20orf149 antibody) at dilution of 1:300

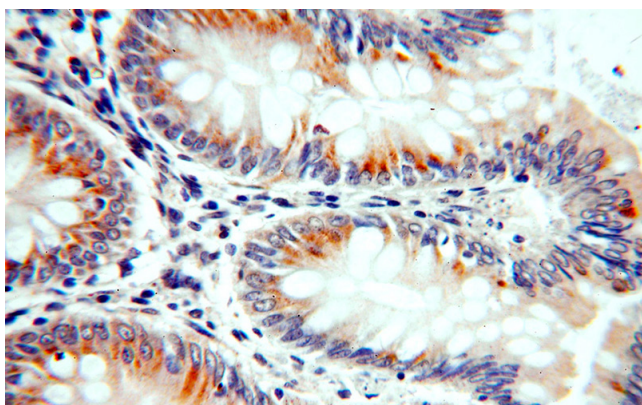


Immunohistochemical of paraffin-embedded human colon using Catalog No:108693(C20orf149 antibody) at dilution of 1:100 (under 10x lens)

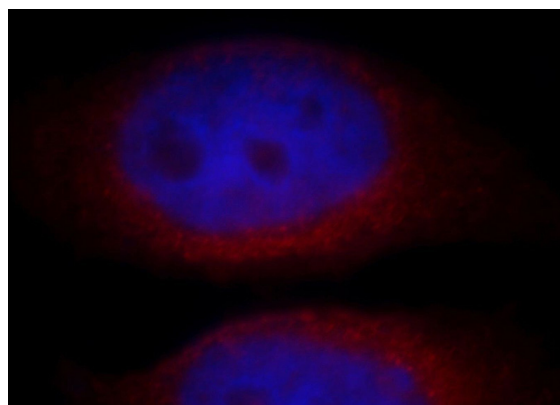
C20orf149 antibody



Catalog Number: 108693



Immunohistochemical of paraffin-embedded human colon using Catalog No:108693(C20orf149 antibody) at dilution of 1:100 (under 40x lens)



Immunofluorescent analysis of HeLa cells, using C20orf149 antibody Catalog No:108693 at 1:25 dilution and Rhodamine-labeled goat anti-rabbit IgG (red). Blue pseudocolor = DAPI (fluorescent DNA dye).