

# RPL37A antibody



Catalog Number: 114893

## Product name

RPL37A antibody

IHC: 1:20-1:200

IF: 1:20-1:200

## Specificity

Human, Mouse, Rat; other species not tested.

## Antibody description

RPL37A Rabbit Polyclonal antibody. Positive WB detected in MCF7 cells, SH-SY5Y cells. Positive IHC detected in human breast cancer tissue. Positive IF detected in SH-SY5Y cells. Observed molecular weight by Western-blot: 10 kDa

## Preparation

This antibody was obtained by immunization of RPL37A recombinant protein (Accession Number: BC063476). Purification method: Antigen affinity purified.

## Formulation

PBS with 0.02% sodium azide and 50% glycerol pH 7.3.

## Storage

Store at -20°C. DO NOT ALIQUOT

## Clonality

Polyclonal

## Ig Type

Rabbit IgG

## Applications

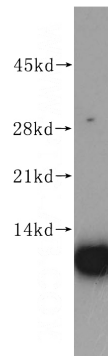
ELISA, WB, IHC, IF

## Dilutions

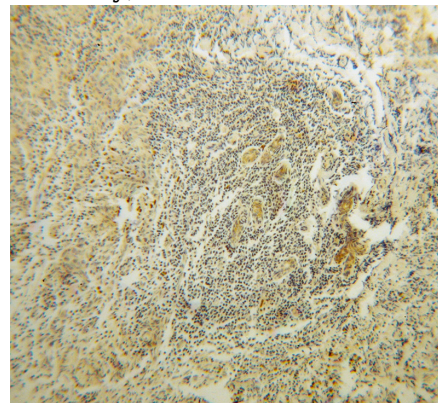
Recommended Dilution:

WB: 1:500-1:5000

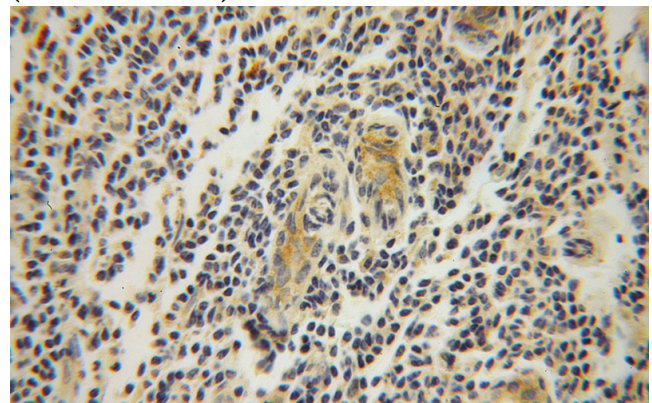
## Validations



MCF7 cells were subjected to SDS PAGE followed by western blot with Catalog No:114893(RPL37A antibody) at dilution of 1:400



Immunohistochemical of paraffin-embedded human breast cancer using Catalog No:114893(RPL37A antibody) at dilution of 1:100 (under 10x lens)



Immunohistochemical of paraffin-embedded

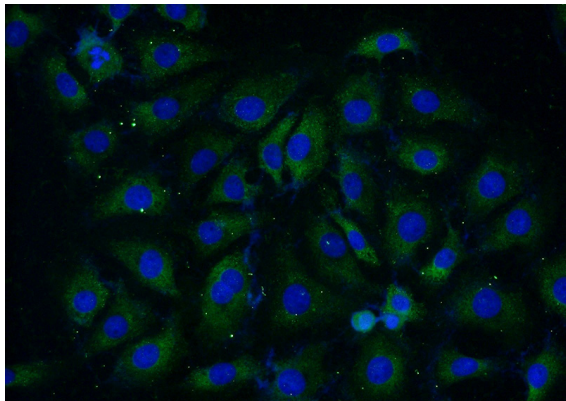
# RPL37A antibody



Catalog Number: 114893

---

human breast cancer using Catalog  
No:114893(RPL37A antibody) at dilution of 1:100  
(under 40x lens)



Immunofluorescent analysis of (-20oc Ethanol)  
fixed SH-SY5Y cells using Catalog  
No:114893(RPL37A Antibody) at dilution of 1:50  
and Alexa Fluor 488-conjugated AffiniPure Goat  
Anti-Rabbit IgG(H+L)