

# SCAMP2 antibody



Catalog Number: 114983

## Product name

SCAMP2 antibody

## Immunogen

[Human SCAMP2 Recombinant protein \(GST tag & His tag\)](#)

## Specificity

Human, Mouse, Rat; other species not tested.

## Antibody description

SCAMP2 Rabbit Polyclonal antibody. Positive WB detected in HepG2 cells, HeLa cells, human liver tissue, mouse lung tissue. Positive IHC detected in human pancreas cancer tissue. Positive IF detected in HEK-293 cells. Positive FC detected in HEK-293 cells. Observed molecular weight by Western-blot: 39kd

## Preparation

This antibody was obtained by immunization of SCAMP2 recombinant protein (Accession Number: NM\_005697). Purification method: Antigen affinity purified.

## Formulation

PBS with 0.02% sodium azide and 50% glycerol pH 7.3.

## Storage

Store at -20°C. DO NOT ALIQUOT

## Clonality

Polyclonal

## Ig Type

Rabbit IgG

## Applications

ELISA, WB, IHC, FC, IF

## Dilutions

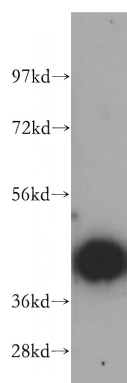
Recommended Dilution:

WB: 1:500-1:5000

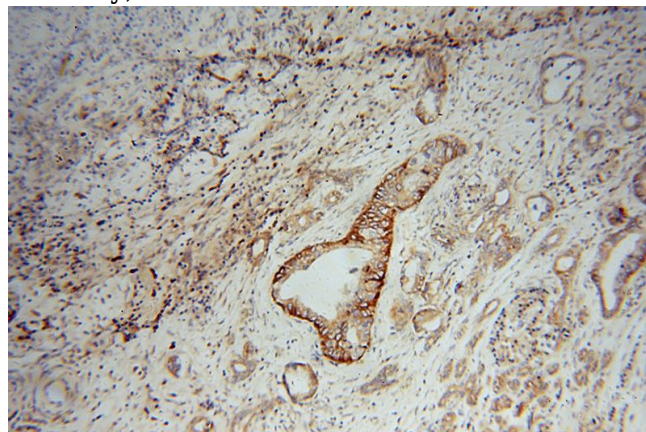
IHC: 1:20-1:200

IF: 1:10-1:100

## Validations



HepG2 cells were subjected to SDS PAGE followed by western blot with Catalog No:114983(SCAMP2 antibody) at dilution of 1:500

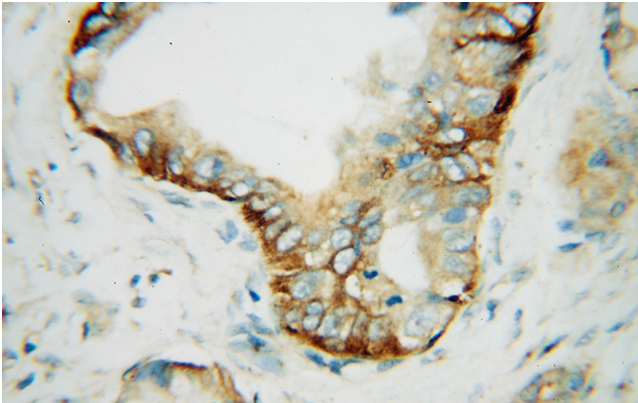


Immunohistochemical of paraffin-embedded human pancreas cancer using Catalog No:114983(SCAMP2 antibody) at dilution of 1:100 (under 10x lens)

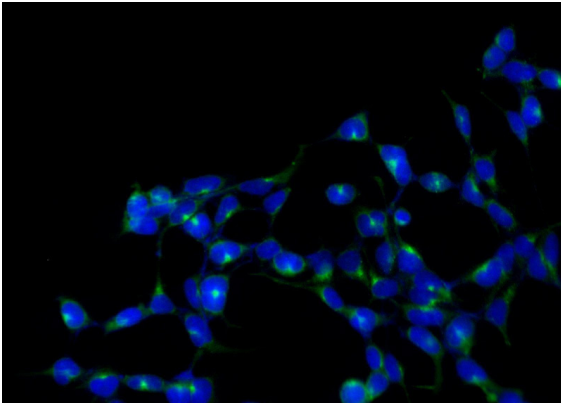
# SCAMP2 antibody



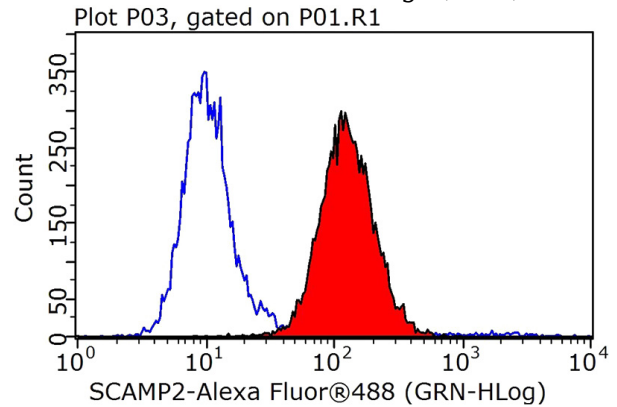
Catalog Number: 114983



Immunohistochemical of paraffin-embedded human pancreas cancer using Catalog No:114983(SCAMP2 antibody) at dilution of 1:100 (under 40x lens)



Immunofluorescent analysis of HEK-293 cells using Catalog No:114983(SCAMP2 Antibody) at dilution of 1:25 and Alexa Fluor 488-conjugated AffiniPure Goat Anti-Rabbit IgG(H+L)



$1 \times 10^6$  HEK-293 cells were stained with 0.2ug SCAMP2 antibody (Catalog No:114983, red) and control antibody (blue). Fixed with 90% MeOH blocked with 3% BSA (30 min). Alexa Fluor 488-conjugated AffiniPure Goat Anti-Rabbit IgG(H+L) with dilution 1:1000.