

# RPL27 antibody



Catalog Number: 114883

## Product name

RPL27 antibody

Recommended Dilution:

WB: 1:200-1:2000

## Immunogen

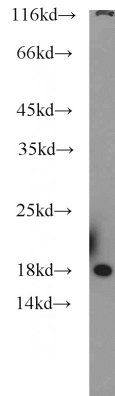
IHC: 1:20-1:200

[Human RPL27 Recombinant protein \(GST tag & His tag\)](#)

## Validations

## Specificity

Human, Mouse, Rat; other species not tested.



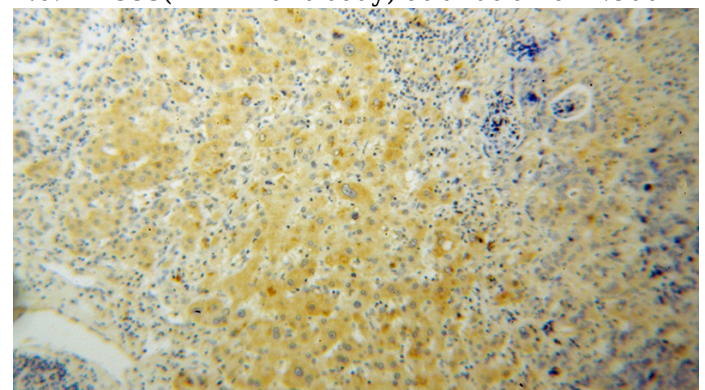
## Antibody description

RPL27 Rabbit Polyclonal antibody. Positive IHC detected in human liver cancer tissue. Positive WB detected in mouse liver tissue, human liver tissue. Observed molecular weight by Western-blot: 18kd

mouse liver tissue were subjected to SDS PAGE followed by western blot with Catalog No:114883(RPL27 antibody) at dilution of 1:500

## Preparation

This antibody was obtained by immunization of RPL27 recombinant protein (Accession Number: NM\_001349922). Purification method: Antigen affinity purified.



## Formulation

PBS with 0.02% sodium azide and 50% glycerol pH 7.3.

## Storage

Store at -20°C. DO NOT ALIQUOT

## Clonality

Polyclonal

## Ig Type

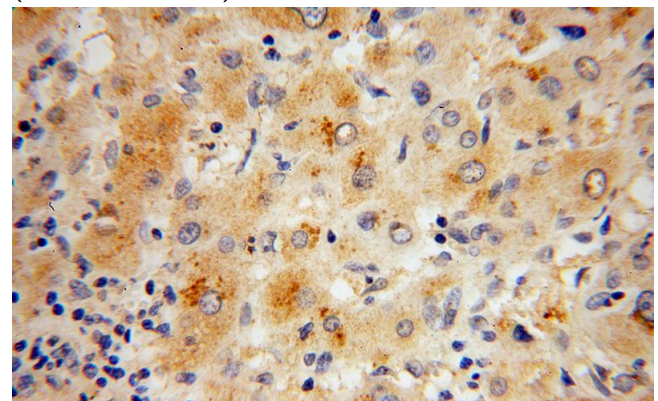
Rabbit IgG

## Applications

ELISA, IHC, WB

## Dilutions

Immunohistochemical of paraffin-embedded human liver cancer using Catalog No:114883(RPL27 antibody) at dilution of 1:100 (under 10x lens)



# RPL27 antibody



Catalog Number: 114883

---

Immunohistochemical of paraffin-embedded  
human liver cancer using Catalog

No:114883(RPL27 antibody) at dilution of 1:100  
(under 40x lens)