

KLF6 antibody



Catalog Number: 112083

Product name

KLF6 antibody

Immunogen

[Human KLF6 Recombinant protein \(GST tag & His tag\)](#)

Specificity

Human, Mouse, Rat; other species not tested.

Antibody description

KLF6 Rabbit Polyclonal antibody. Positive WB detected in HEK-293 cells, human placenta tissue, mouse colon tissue, mouse testis tissue, mouse thymus tissue, PC-3 cells. Positive IHC detected in human testis tissue. Observed molecular weight by Western-blot: 42-45kd

Preparation

This antibody was obtained by immunization of KLF6 recombinant protein (Accession Number: NM_001008490). Purification method: Antigen affinity purified.

Formulation

PBS with 0.02% sodium azide and 50% glycerol pH 7.3.

Storage

Store at -20°C. DO NOT ALIQUOT

Clonality

Polyclonal

Ig Type

Rabbit IgG

Applications

ELISA, WB, IHC

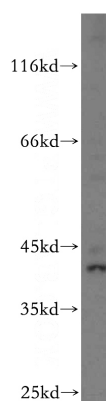
Dilutions

Recommended Dilution:

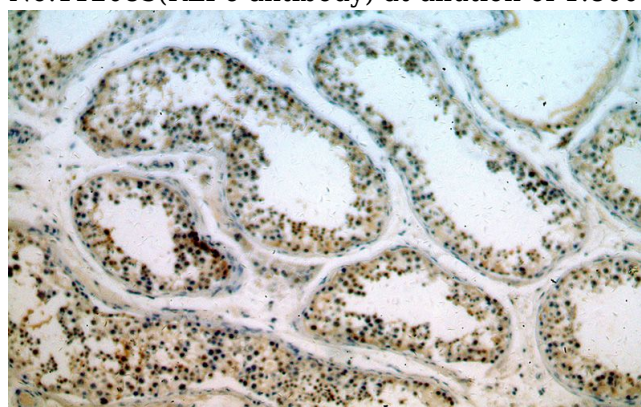
WB: 1:200-1:2000

IHC: 1:20-1:200

Validations



HEK-293 cells were subjected to SDS PAGE followed by western blot with Catalog No:112083(KLF6 antibody) at dilution of 1:800



Immunohistochemical of paraffin-embedded human testis using Catalog No:112083(KLF6 antibody) at dilution of 1:200 (under 10x lens)