

TMP21 antibody



Catalog Number: 116273

Product name

TMP21 antibody

IHC: 1:20-1:200

IF: 1:10-1:100

Specificity

Human, Mouse, Rat; other species not tested.

Antibody description

TMP21 Rabbit Polyclonal antibody. Positive IHC detected in human pancreas tissue, human colon cancer tissue. Positive IF detected in Hela cells. Positive WB detected in mouse pancreas tissue, BxPC-3 cells, PC-3 cells. Observed molecular weight by Western-blot: 21kd

Preparation

This antibody was obtained by immunization of TMP21 recombinant protein (Accession Number: NM_006827). Purification method: Antigen affinity purified.

Formulation

PBS with 0.02% sodium azide and 50% glycerol pH 7.3.

Storage

Store at -20°C. DO NOT ALIQUOT

Clonality

Polyclonal

Ig Type

Rabbit IgG

Applications

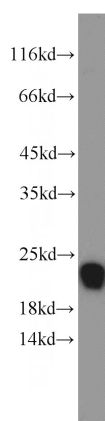
ELISA, WB, IHC, IF

Dilutions

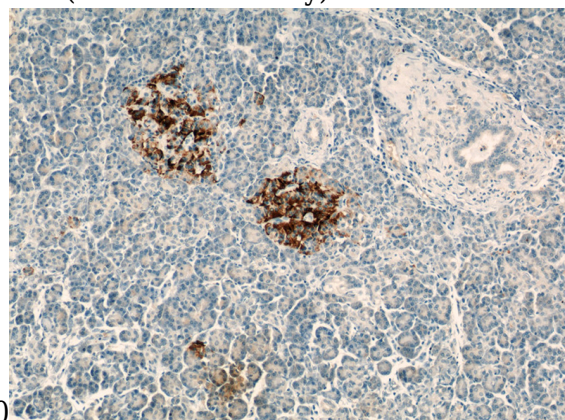
Recommended Dilution:

WB: 1:500-1:5000

Validations

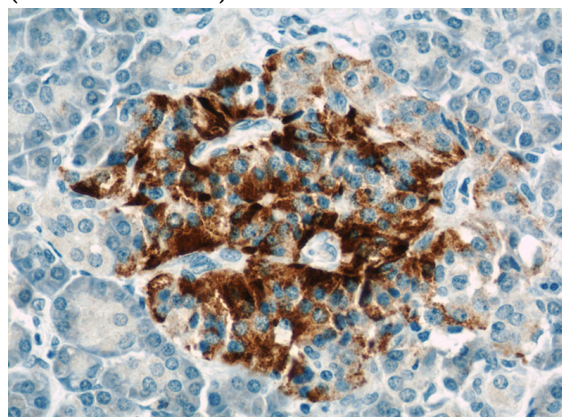


mouse pancreas tissue were subjected to SDS PAGE followed by western blot with Catalog No:116273(TMED10 antibody) at dilution of



1:1000

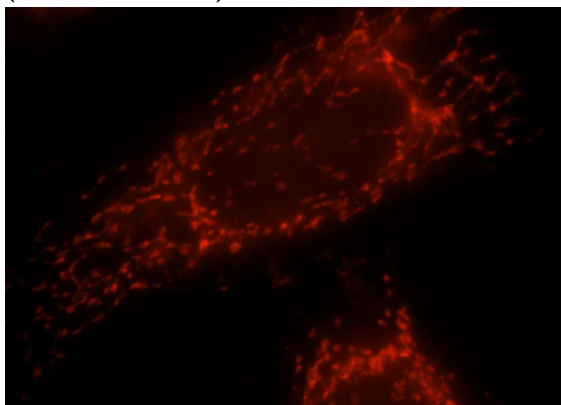
Immunohistochemical of paraffin-embedded human pancreas using Catalog No:116273(TMED10 antibody) at dilution of 1:50 (under 10x lens)



TMP21 antibody

Catalog Number: 116273

Immunohistochemical of paraffin-embedded human pancreas using Catalog No:116273(TMED10 antibody) at dilution of 1:50 (under 40x lens)



Immunofluorescent analysis of Hela cells, using TMED10 antibody Catalog No:116273 at 1:25 dilution and Rhodamine-labeled goat anti-rabbit IgG (red).