

# FAM158A antibody



Catalog Number: 110573

## Product name

FAM158A antibody

Recommended Dilution:

WB: 1:200-1:1000

## Immunogen

[Human FAM158A Recombinant protein \(His tag\)](#)

IHC: 1:20-1:200

IF: 1:20-1:200

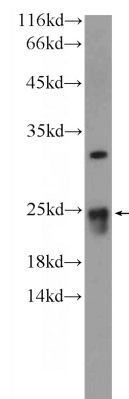
## Specificity

Human; other species not tested.

## Validations

## Antibody description

FAM158A Rabbit Polyclonal antibody. Positive WB detected in HEK-293 cells. Positive IHC detected in human pancreas tissue. Positive IF detected in HEK-293 cells. Observed molecular weight by Western-blot: 23 kDa



## Preparation

This antibody was obtained by immunization of FAM158A recombinant protein (Accession Number: XM\_005267721). Purification method: Antigen Affinity purified.

HEK-293 cells were subjected to SDS PAGE followed by western blot with Catalog No:110573(FAM158A Antibody) at dilution of

## Formulation

PBS with 0.02% sodium azide and 50% glycerol pH 7.3.

## Storage

Store at -20°C. DO NOT ALIQUOT

## Clonality

Polyclonal

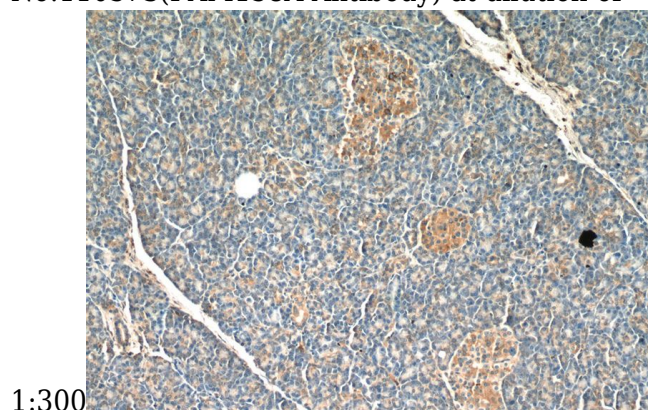
## Ig Type

Rabbit IgG

## Applications

ELISA, WB, IHC, IF

## Dilutions



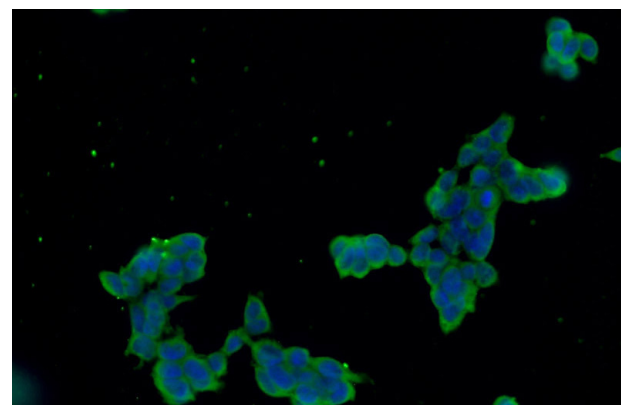
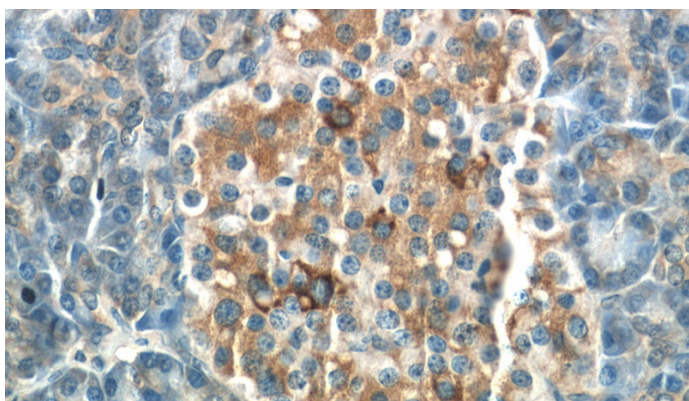
Immunohistochemistry of paraffin-embedded human pancreas tissue slide using Catalog No:110573(FAM158A Antibody) at dilution of 1:50 (under 10x lens)

# FAM158A antibody



Catalog Number: 110573

---



Immunohistochemistry of paraffin-embedded human pancreas tissue slide using Catalog No:110573(FAM158A Antibody) at dilution of 1:50 (under 40x lens)

Immunofluorescent analysis of HEK-293 cells using Catalog No:110573(FAM158A Antibody) at dilution of 1:50 and Alexa Fluor 488-conjugated AffiniPure Goat Anti-Rabbit IgG(H+L)