

Anti-GSK3 alpha + beta Rabbit antibody



Catalog Number: 168663

Product name

Anti-GSK3 alpha + beta Rabbit antibody

Specificity

Human, Mouse, Rat

Antibody description

GSK3 alpha + beta Rabbit monoclonal antibody

Preparation

Antigen: A synthetic peptide of human GSK3 alpha

Formulation

Supplied in 50nM Tris-Glycine(pH 7.4), 0.15M NaCl, 40%Glycerol, 0.01% sodium azide and 0.05% BSA.

Storage

Store at 4°C short term. Aliquot and store at -20°C long term. Avoid freeze / thaw cycle.

Clonality

Monoclonal

Ig Type

Rabbit IgG

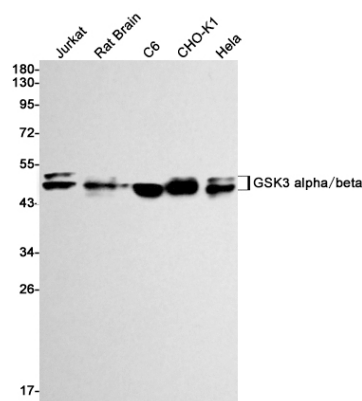
Applications

WB

Dilutions

1:1000

Validations



Western blot detection of GSK3 alpha + beta in Jurkat,Rat Brain,C6,CHO-K1,HeLa cell lysates using GSK3 alpha + beta Rabbit mAb(1:1000 diluted).Predicted band size:51,47 kDa.Observed band size:51,47kDa.