

**Product name**

LACRT antibody

**Specificity**

human; other species not tested.

**Antibody description**

LACRT Rabbit Polyclonal antibody. Positive IHC detected in human breast cancer.

**Preparation**

This antibody was obtained by immunization of LACRT recombinant protein (Accession Number: NM\_033277). Purification method: Antigen affinity purified.

**Formulation**

PBS with 0.02% sodium azide and 50% glycerol pH 7.3.

**Storage**

Store at -20°C. DO NOT ALIQUOT

**Clonality**

Polyclonal

**Ig Type**

Rabbit IgG

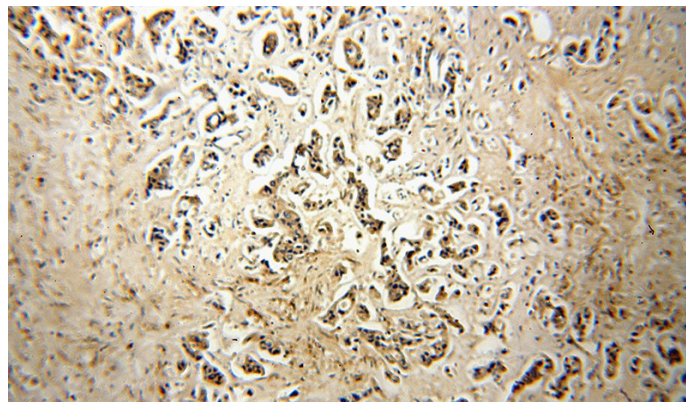
**Applications**

ELISA, IHC

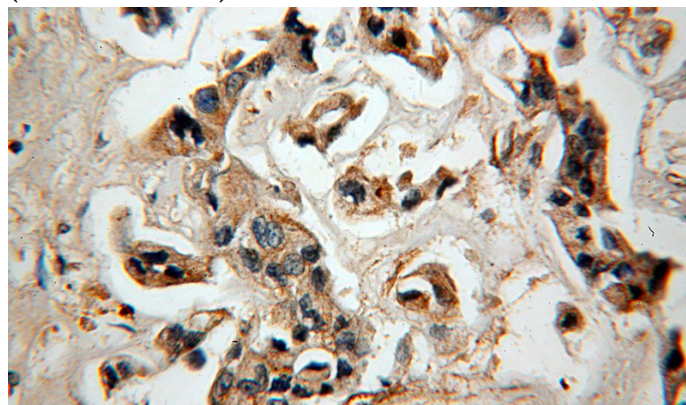
**Dilutions**

Recommended Dilution:

IHC: 1:20-1:200

**Validations**

Immunohistochemical of paraffin-embedded human breast cancer using Catalog No:112263(LACRT antibody) at dilution of 1:50 (under 10x lens)



Immunohistochemical of paraffin-embedded human breast cancer using Catalog No:112263(LACRT antibody) at dilution of 1:50 (under 40x lens)