

# UBLCP1 antibody



Catalog Number: 116653

## Product name

UBLCP1 antibody

## Immunogen

[Human UBLCP1 Recombinant protein \(GST tag & His tag\)](#)

## Specificity

Human, Mouse, Rat; other species not tested.

## Antibody description

UBLCP1 Rabbit Polyclonal antibody. Positive IP detected in K-562 cells. Positive WB detected in K-562 cells, human brain tissue. Positive IHC detected in human ovary tumor tissue. Positive IF detected in Hela cells. Observed molecular weight by Western-blot: 37 kDa

## Preparation

This antibody was obtained by immunization of UBLCP1 recombinant protein (Accession Number: NM\_145049). Purification method: Antigen affinity purified.

## Formulation

PBS with 0.1% sodium azide and 50% glycerol pH 7.3.

## Storage

Store at -20°C. DO NOT ALIQUOT

## Clonality

Polyclonal

## Ig Type

Rabbit IgG

## Applications

ELISA, WB, IHC, IF, IP

## Dilutions

Recommended Dilution:

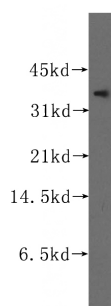
WB: 1:500-1:5000

IP: 1:200-1:2000

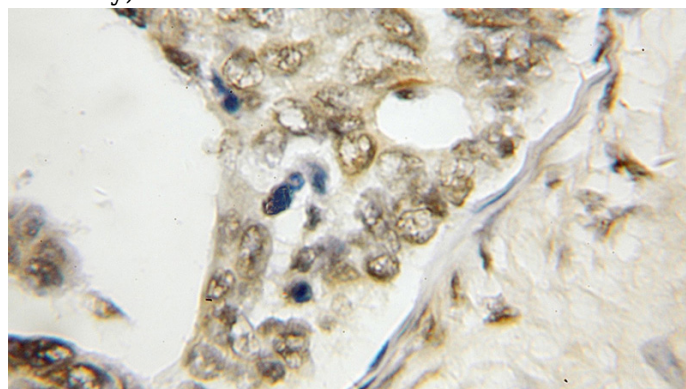
IHC: 1:20-1:200

IF: 1:20-1:200

## Validations



K-562 cells were subjected to SDS PAGE followed by western blot with Catalog No:116653(UBLCP1 antibody) at dilution of 1:500



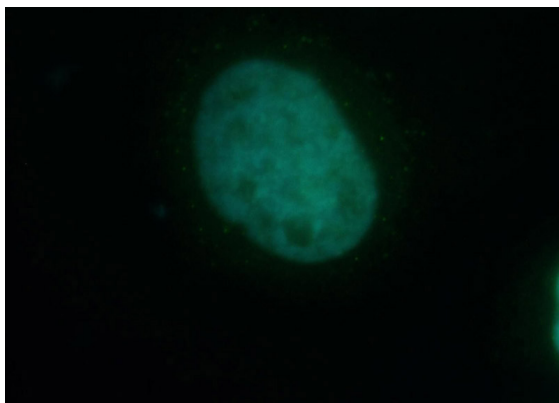
Immunohistochemical of paraffin-embedded human ovary tumor using Catalog No:116653(UBLCP1 antibody) at dilution of 1:50 (under 10x lens)


# UBLCP1 antibody



Catalog Number: 116653

---



Immunofluorescent analysis of HeLa cells, using UBLCP1 antibody Catalog No:116653 at 1:50 dilution and FITC-labeled donkey anti-rabbit IgG (green). Blue pseudocolor = DAPI (fluorescent DNA dye). 

IP Result of anti-UBLCP1 (IP:Catalog No:116653, 3ug; Detection:Catalog No:116653 1:500) with K-562 cells lysate 1760ug.