

# ELF3 Polyclonal Antibody



Catalog Number: 161653

## Product name

ELF3 Polyclonal Antibody

## Specificity

Human, Mouse

## Antibody description

Polyclonal antibody to ELF3

## Preparation

Antigen: Recombinant fusion protein containing a sequence corresponding to amino acids 1-280 of human ELF3 (NP\_004424.3).

## Formulation

PBS with 0.02% sodium azide, 50% glycerol, pH7.3.

## Storage

Store at -20°C. Avoid freeze / thaw cycles.

## Clonality

Polyclonal

## Ig Type

Rabbit IgG

## Applications

WB, IHC, IF, IP

## Dilutions

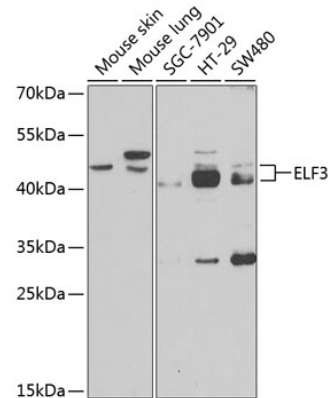
WB 1:500 - 1:2000

IHC 1:50 - 1:200

IF 1:50 - 1:200

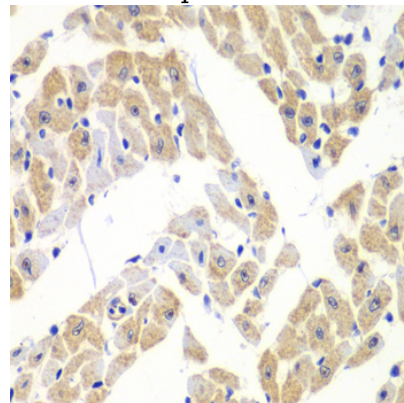
IP 1:20 - 1:50

## Validations



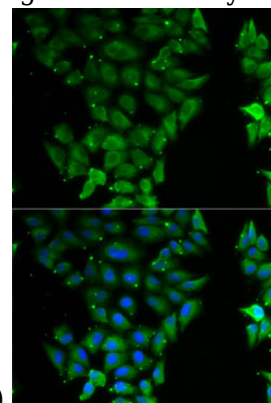
Western blot - ELF3 Polyclonal Antibody

Western blot analysis of extracts of various cell lines, using ELF3 antibody at 1:1000 dilution. Secondary antibody: HRP Goat Anti-Rabbit IgG (H+L) at 1:10000 dilution. Lysates/proteins: 25ug per lane. Blocking buffer: 3% nonfat dry milk in TBST. Detection: ECL Basic Kit. Exposure time: 90s.



Immunohistochemistry - ELF3 Polyclonal Antibody

Immunohistochemistry of paraffin-embedded mouse heart using ELF3 antibody at dilution of



1:100 (40x lens).

# ELF3 Polyclonal Antibody

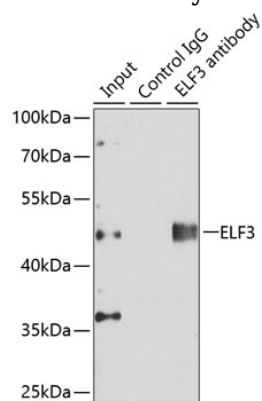


Catalog Number: 161653

---

## Immunofluorescence - ELF3 Polyclonal Antibody

Immunofluorescence analysis of MCF7 cells using ELF3 antibody . Blue: DAPI for nuclear staining.



## Immunoprecipitation - ELF3 Polyclonal Antibody

Immunoprecipitation analysis of 150ug extracts of A549 cells using 3ug ELF3 antibody . Western blot was performed from the immunoprecipitate using ELF3 antibody at a dilution of 1:500. Detection: ECL Enhanced Kit . Exposure time: 30s.