

LASS2 antibody



Catalog Number: 112153

Product name

LASS2 antibody

Recommended Dilution:

WB: 1:200-1:1000

Immunogen

[Human LASS2 Recombinant protein \(GST tag & His tag\)](#)

IP: 1:200-1:2000

IF: 1:10-1:100

Specificity

Human; other species not tested.

Antibody description

LASS2 Rabbit Polyclonal antibody. Positive IP detected in HeLa cells. Positive WB detected in HepG2 cells, HeLa cells. Positive IF detected in HeLa cells. Observed molecular weight by Western-blot: 45 kDa

Preparation

This antibody was obtained by immunization of LASS2 recombinant protein (Accession Number: NM_022075). Purification method: Antigen affinity purified.

Formulation

PBS with 0.1% sodium azide and 50% glycerol pH 7.3.

Storage

Store at -20°C. DO NOT ALIQUOT

Clonality

Polyclonal

Ig Type

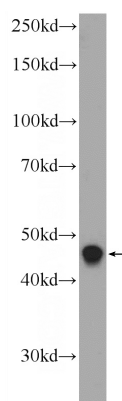
Rabbit IgG

Applications

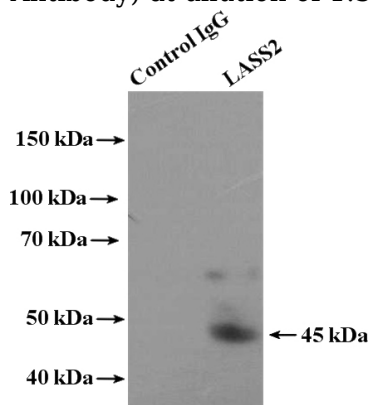
ELISA, IF, WB, IP

Dilutions

Validations



HepG2 cells were subjected to SDS PAGE followed by western blot with Catalog No:112153(LASS2 Antibody) at dilution of 1:300

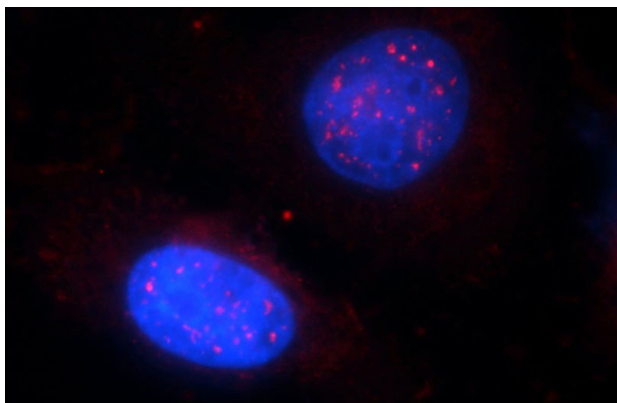


IP Result of anti-LASS2 (IP:Catalog No:112153, 4ug; Detection:Catalog No:112153 1:500) with HeLa cells lysate 3200ug.

LASS2 antibody



Catalog Number: 112153



Immunofluorescent analysis of HeLa cells using Catalog No:112153(LASS2 Antibody) at dilution of 1:25 and Rhodamine-Goat anti-Rabbit IgG