

# Anti-SERPINA7 antibody



Catalog Number: 175053

## Product name

Anti-SERPINA7 antibody

## Specificity

Human

## Antibody description

Mouse monoclonal antibody to SERPINA7

## Preparation

This antigen of this antibody was recombinant protein

## Formulation

Liquid, 1\*TBS (pH7.4), 1%BSA, 40%Glycerol.  
Preservative: 0.05% Sodium Azide.

## Storage

Store at +4°C after thawing. Aliquot store at -20°C or -80°C. Avoid repeated freeze / thaw cycles.

## Clonality

Monoclonal

## Ig Type

Mouse IgG1

## Applications

WB, ICC, IHC-P, FC

## Dilutions

WB: 1:500-1:2,000

ICC: 1:100-1:200

IHC-P: 1:100-1:200

FC: 1:100-1:200

## Validations

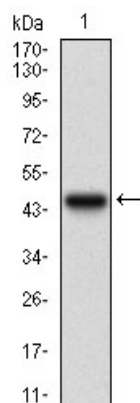


Fig1: Western blot analysis of SERPINA7 on human SERPINA7 recombinant protein using anti-SERPINA7 antibody at 1/1,000 dilution.

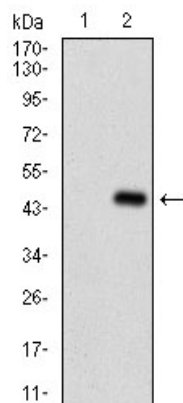


Fig2: Western blot analysis of SERPINA7 on HEK293 (1) and SERPINA7-hIgGFc transfected HEK293 (2) cell lysate using anti-SERPINA7 antibody at 1/1,000 dilution.

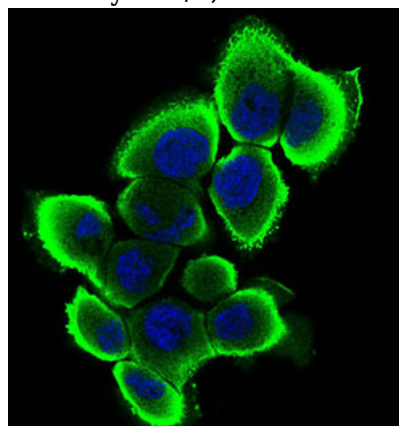


Fig3: ICC staining SERPINA7 (green) in A431 cells. The nuclear counter stain is DAPI (blue). Cells were fixed in paraformaldehyde, permeabilised with 0.25% Triton X100/PBS.

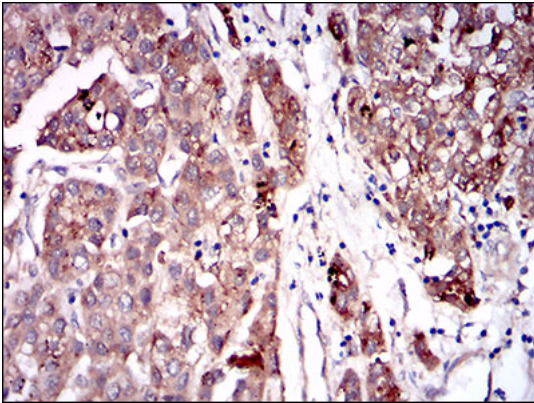


Fig4: Immunohistochemical analysis of paraffin-embedded human liver cancer tissue using anti-SERPINA7 antibody. Counter stained with hematoxylin.

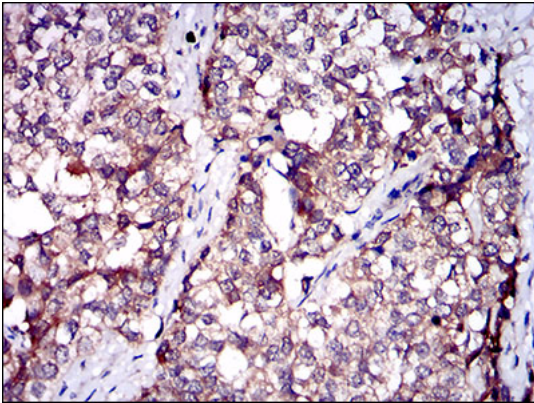


Fig5: Immunohistochemical analysis of paraffin-embedded human bladder cancer tissue using anti-SERPINA7 antibody. Counter stained with hematoxylin.

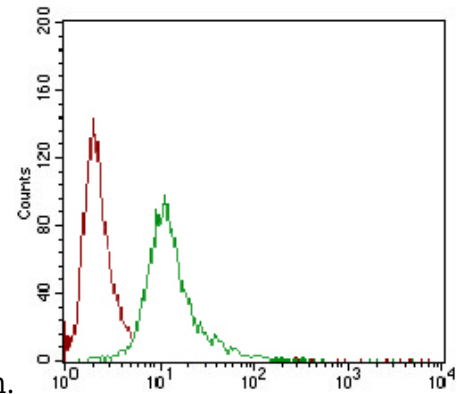


Fig6: Flow cytometric analysis of A431 cells with SERPINA7 antibody at 1/100 dilution (green) compared with an unlabelled control (cells without incubation with primary antibody; red).