

DEAF1 antibody



Catalog Number: 109843

Product name

DEAF1 antibody

Recommended Dilution:

WB: 1:200-1:2000

Specificity

Human, Mouse, Rat; other species not tested.

IHC: 1:20-1:200

IF: 1:50-1:500

Antibody description

DEAF1 Rabbit Polyclonal antibody. Positive WB detected in SH-SY5Y cells. Positive IHC detected in human kidney tissue, human brain tissue, human lung tissue, human ovary tissue, human placenta tissue, human skin tissue, human spleen tissue, human testis tissue. Positive IF detected in SH-SY5Y cells. Observed molecular weight by Western-blot: 60-63 kDa, 72 kDa

Preparation

This antibody was obtained by immunization of DEAF1 recombinant protein (Accession Number: NM_021008). Purification method: Antigen affinity purified.

Formulation

PBS with 0.02% sodium azide and 50% glycerol pH 7.3.

Storage

Store at -20°C. DO NOT ALIQUOT

Clonality

Polyclonal

Ig Type

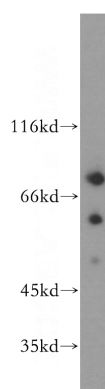
Rabbit IgG

Applications

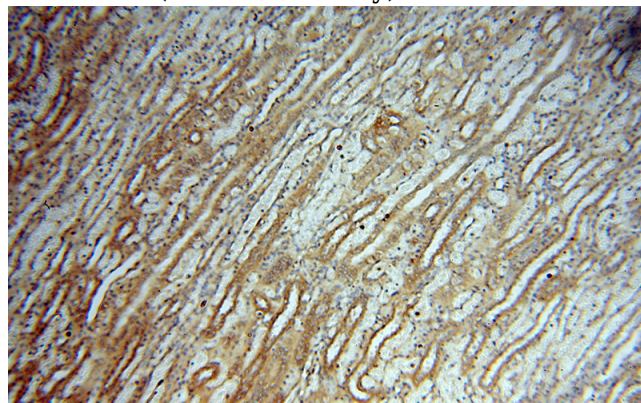
ELISA, WB, IHC, IF

Dilutions

Validations



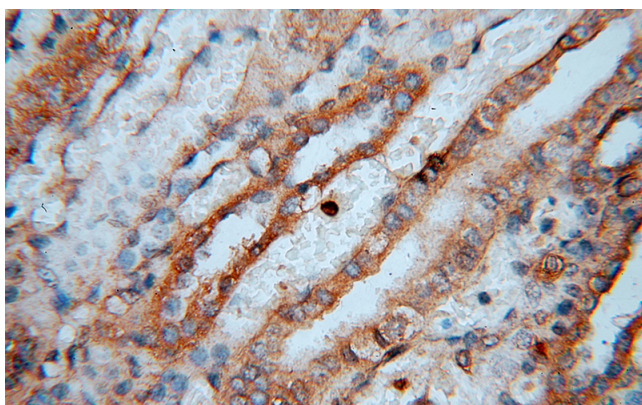
SH-SY5Y cells were subjected to SDS PAGE followed by western blot with Catalog No:109843(DEAF1 antibody) at dilution of 1:500



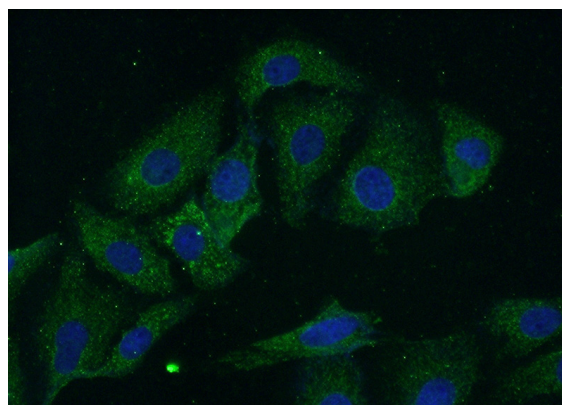
Immunohistochemical of paraffin-embedded human kidney using Catalog No:109843(DEAF1 antibody) at dilution of 1:50 (under 10x lens)

DEAF1 antibody

Catalog Number: 109843



Immunohistochemical of paraffin-embedded human kidney using Catalog No:109843(DEAF1 antibody) at dilution of 1:50 (under 40x lens)



Immunofluorescent analysis of (-20oc Acetone) fixed SH-SY5Y cells using Catalog No:109843(DEAF1 Antibody) at dilution of 1:50 and Alexa Fluor 488-conjugated AffiniPure Goat Anti-Rabbit IgG(H+L)