

Anti-UQCRFS1/RISP Rabbit antibody



Catalog Number: 167033

Product name

Anti-UQCRFS1/RISP Rabbit antibody

Dilutions

WB: 1/1000

Specificity

IHC: 1/100

Human, Mouse, Rat

ICC/IF: 1/20

Antibody description

IP: 1/20

UQCRFS1/RISP Rabbit polyclonal antibody

Preparation

Antigen: A synthetic peptide of human RISP

Formulation

Supplied in 50nM Tris-Glycine(pH 7.4), 0.15M NaCl, 40%Glycerol, 0.01% sodium azide and 0.05% BSA.

Storage

Store at -20°C. Stable for 12 months from date of receipt.

Clonality

Polyclonal

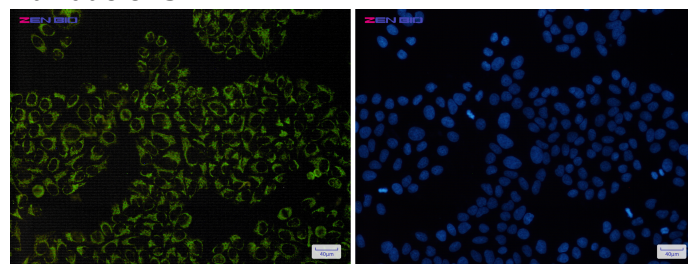
Ig Type

Rabbit IgG

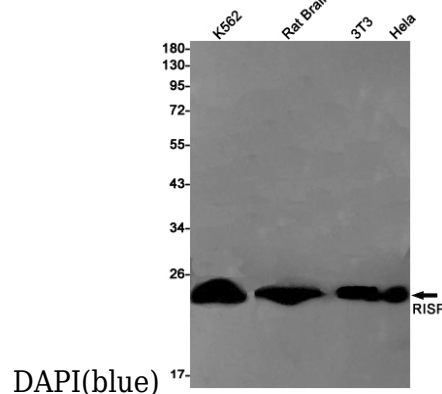
Applications

WB, IHC-P, ICC/IF, IP

Validations



Immunocytochemistry of RISP(green) in HeLa cells using RISP Rabbit pAb at dilution 1/50, and



Western blot detection of RISP in K562, Rat Brain, 3T3, HeLa cell lysates using RISP Rabbit pAb(1:1000 diluted). Predicted band size: 30kDa. Observed band size: 24kDa.