

# CPS1 antibody



Catalog Number: 109523

## Product name

CPS1 antibody

## Immunogen

[Human CPS1 Recombinant protein \(His tag\)](#)

## Specificity

Human, Mouse, Rat; other species not tested.

## Antibody description

CPS1 Rabbit Polyclonal antibody. Positive WB detected in HepG2 cells, mouse liver tissue, rat liver tissue. Observed molecular weight by Western-blot: 150

## Preparation

This antibody was obtained by immunization of CPS1 recombinant protein (Accession Number: XM\_011510641). Purification method: Antigen affinity purified.

## Formulation

PBS with 0.1% sodium azide and 50% glycerol pH 7.3.

## Storage

Store at -20°C. DO NOT ALIQUOT

## Clonality

Polyclonal

## Ig Type

Rabbit IgG

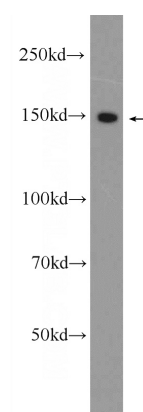
## Applications

ELISA, WB

## Dilutions

Recommended Dilution:  
WB: 1:500-1:5000

## Validations



HepG2 cells were subjected to SDS PAGE followed by western blot with Catalog No:109523(CPS1 Antibody) at dilution of 1:1000