

SLC22A15 antibody



Catalog Number: 115313

Product name

SLC22A15 antibody

Immunogen

[Human SLC22A15 Recombinant protein \(GST tag & His tag\)](#)

Specificity

human, mouse; other species not tested.

Antibody description

SLC22A15 Rabbit Polyclonal antibody. Positive WB detected in HEK-293 cells, A431 cells, human brain tissue, human heart tissue, human skeletal muscle tissue, human placenta tissue, L02 cells. Observed molecular weight by Western-blot: 61-66kd

Preparation

This antibody was obtained by immunization of SLC22A15 recombinant protein (Accession Number: BC026358). Purification method: Antigen affinity purified.

Formulation

PBS with 0.02% sodium azide and 50% glycerol pH 7.3.

Storage

Store at -20°C. DO NOT ALIQUOT

Clonality

Polyclonal

Ig Type

Rabbit IgG

Applications

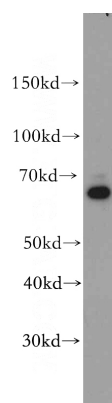
ELISA, WB

Dilutions

Recommended Dilution:

WB: 1:500-1:5000

Validations



HEK-293 cells were subjected to SDS PAGE followed by western blot with Catalog No:115313(SLC22A15 antibody) at dilution of 1:500