

RPS6KB2 antibody



Catalog Number: 114913

Product name

RPS6KB2 antibody

Immunogen

[Human RPS6KB2 Recombinant protein \(GST tag & His tag\)](#)

Specificity

Human; other species not tested.

Antibody description

RPS6KB2 Rabbit Polyclonal antibody. Positive WB detected in MCF-7 cells. Observed molecular weight by Western-blot: 54 kDa

Preparation

This antibody was obtained by immunization of RPS6KB2 recombinant protein (Accession Number: NM_003952). Purification method: Antigen affinity purified.

Formulation

PBS with 0.1% sodium azide and 50% glycerol pH 7.3.

Storage

Store at -20°C. DO NOT ALIQUOT

Clonality

Polyclonal

Ig Type

Rabbit IgG

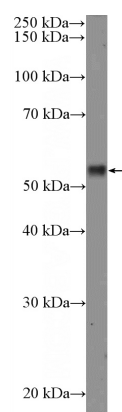
Applications

ELISA, WB

Dilutions

Recommended Dilution:
WB: 1:500-1:5000

Validations



MCF-7 cells were subjected to SDS PAGE followed by western blot with Catalog No:114913(RPS6KB2 Antibody) at dilution of 1:1000