

# GCOM1 antibody



Catalog Number: 110913

## Product name

GCOM1 antibody

Recommended Dilution:

WB: 1:500-1:5000

## Immunogen

[Human GCOM1 Recombinant protein \(GST tag & His tag\)](#)

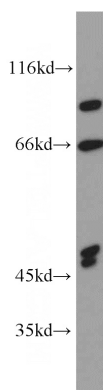
IHC: 1:20-1:200

IF: 1:10-1:100

## Specificity

Human, Mouse, Rat; other species not tested.

## Validations



## Antibody description

GCOM1 Rabbit Polyclonal antibody. Positive WB detected in human brain tissue. Positive IHC detected in human liver tissue. Positive IF detected in HepG2 cells, Hela cells. Observed molecular weight by Western-blot: 64kd, 44-54kd

## Preparation

This antibody was obtained by immunization of GCOM1 recombinant protein (Accession Number: NM\_001018096). Purification method: Antigen affinity purified.

human brain tissue were subjected to SDS PAGE followed by western blot with Catalog No:110913(GCOM1 antibody) at dilution of 1:1500

## Formulation

PBS with 0.02% sodium azide and 50% glycerol pH 7.3.

## Storage

Store at -20°C. DO NOT ALIQUOT

## Clonality

Polyclonal

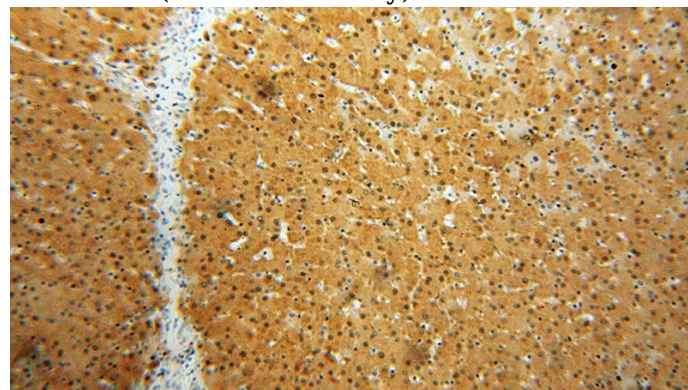
## Ig Type

Rabbit IgG

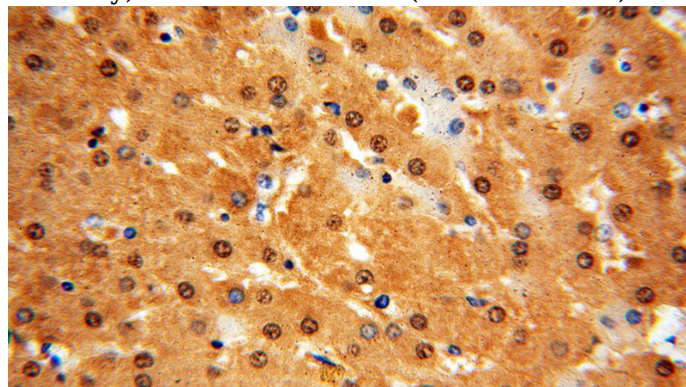
## Applications

ELISA, WB, IHC, IF

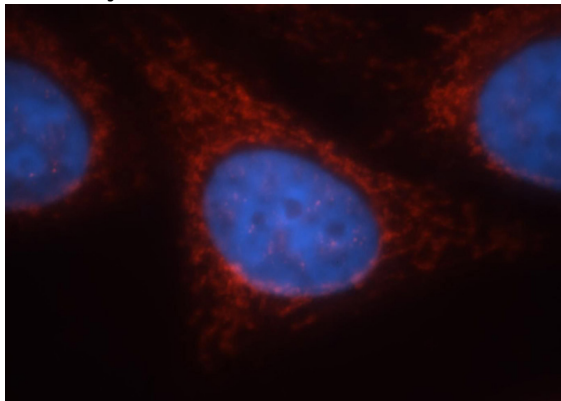
## Dilutions



Immunohistochemical of paraffin-embedded human liver using Catalog No:110913(GCOM1 antibody) at dilution of 1:100 (under 10x lens)



Immunohistochemical of paraffin-embedded human liver using Catalog No:110913(GCOM1 antibody) at dilution of 1:100 (under 40x lens)



Immunofluorescent analysis of HepG2 cells, using GCOM1 antibody Catalog No:110913 at 1:25 dilution and Rhodamine-labeled goat anti-rabbit IgG (red). Blue pseudocolor = DAPI (fluorescent DNA dye).