

ZNF622 antibody



Catalog Number: 117013

Product name

ZNF622 antibody

Recommended Dilution:

WB: 1:1000-1:10000

Immunogen

[Human ZNF622 Recombinant protein \(GST tag & His tag\)](#)

IHC: 1:20-1:200

IF: 1:10-1:100

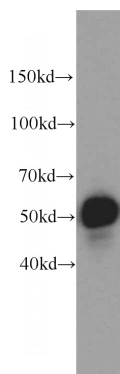
Specificity

human, mouse, rat; other species not tested.

Validations

Antibody description

ZNF622 Rabbit Polyclonal antibody. Positive IHC detected in human hepat°Cirrhosis. Positive IF detected in Hela. Positive WB detected in HeLa cells. Observed molecular weight by Western-blot: 52-60kd



Preparation

This antibody was obtained by immunization of ZNF622 recombinant protein (Accession Number: NM_033414). Purification method: Antigen affinity purified.

HeLa cells were subjected to SDS PAGE followed by western blot with Catalog No:117013(ZNF622 antibody) at dilution of 1:500

Formulation

PBS with 0.02% sodium azide and 50% glycerol pH 7.3.

Storage

Store at -20°C. DO NOT ALIQUOT

Clonality

Polyclonal

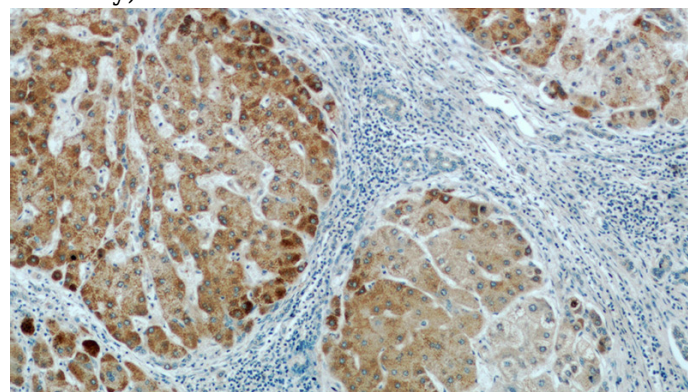
Ig Type

Rabbit IgG

Applications

ELISA, WB, IHC, IF

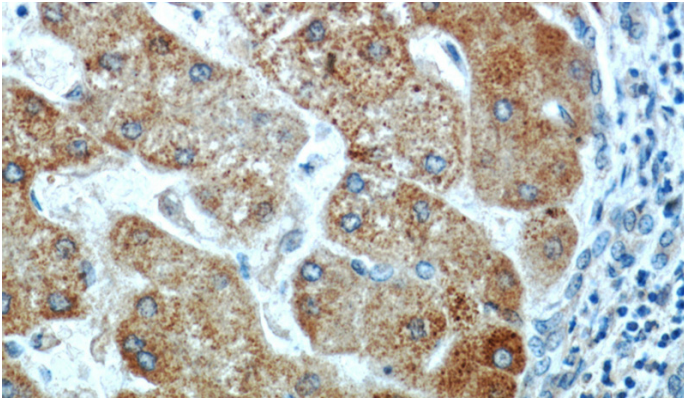
Dilutions



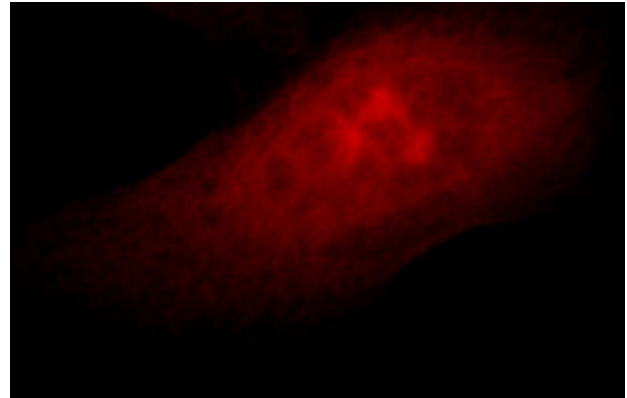
Immunohistochemical of paraffin-embedded human hepatocirrhosis using Catalog No:117013(ZNF622 antibody) at dilution of 1:100 (under 10x lens)

ZNF622 antibody

Catalog Number: 117013



Immunohistochemical of paraffin-embedded human hepatocirrhosis using Catalog No:117013(ZNF622 antibody) at dilution of 1:100 (under 40x lens)



Immunofluorescent analysis of HeLa cells, using ZNF622 antibody Catalog No:117013 at 1:25 dilution and Rhodamine-labeled goat anti-rabbit IgG (red).