

# NaDC3 antibody



Catalog Number: 113013

## Product name

NaDC3 antibody

Recommended Dilution:

IP: 1:200-1:2000

## Immunogen

IHC: 1:20-1:200

[Human SLC13A3 Recombinant protein \(GST tag & His tag\)](#)

## Validations

## Specificity

Human, Mouse; other species not tested.

## Antibody description

NaDC3 Rabbit Polyclonal antibody. Positive IP detected in mouse kidney tissue. Positive IHC detected in human kidney tissue. Observed molecular weight by Western-blot: 65-70 kDa

## Preparation

This antibody was obtained by immunization of NaDC3 recombinant protein (Accession Number: NM\_022829). Purification method: Antigen affinity purified.

## Formulation

PBS with 0.1% sodium azide and 50% glycerol pH 7.3.

## Storage

Store at -20°C. DO NOT ALIQUOT

## Clonality

Polyclonal

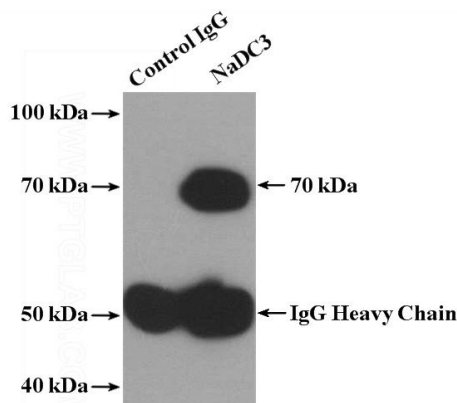
## Ig Type

Rabbit IgG

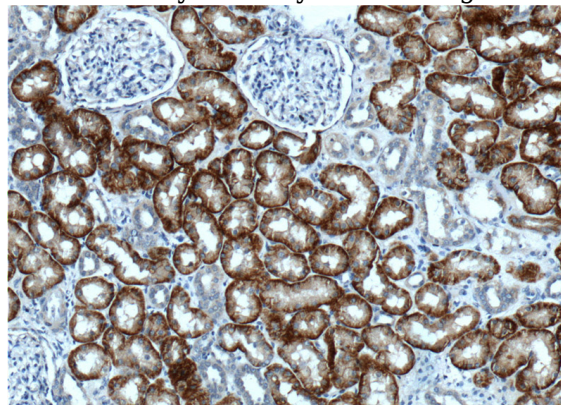
## Applications

ELISA, IP, IHC

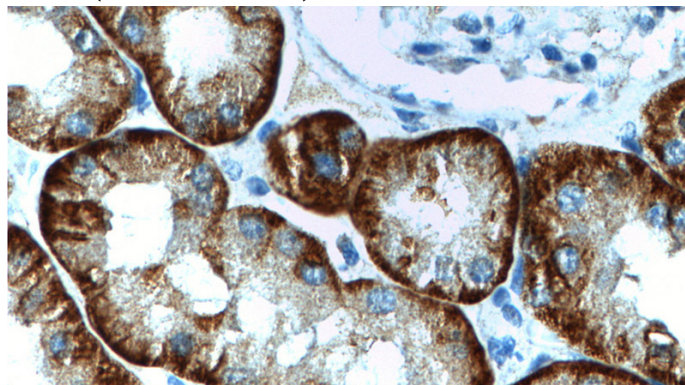
## Dilutions



IP Result of anti-SLC13A3 (IP:Catalog No:113013, 4ug; Detection:Catalog No:113013 1:500) with mouse kidney tissue lysate 4000ug.



Immunohistochemistry of paraffin-embedded human kidney tissue slide using Catalog No:113013(SLC13A3 Antibody) at dilution of 1:200 (under 10x lens).



# NaDC3 antibody



Catalog Number: 113013

---

Immunohistochemistry of paraffin-embedded human kidney tissue slide using Catalog

No:113013(SLC13A3 Antibody) at dilution of 1:200 (under 40x lens).