

KIF3A antibody



Catalog Number: 112013

Product name

KIF3A antibody

IP: 1:200-1:2000

IHC: 1:20-1:200

Specificity

Human, Mouse; other species not tested.

Antibody description

KIF3A Rabbit Polyclonal antibody. Positive IP detected in mouse brain tissue. Positive WB detected in human cerebellum tissue, mouse brain tissue, mouse cerebellum tissue. Positive IHC detected in human gliomas tissue. Observed molecular weight by Western-blot: 80kd

Preparation

This antibody was obtained by immunization of KIF3A recombinant protein (Accession Number: NM_001300792). Purification method: Antigen affinity purified.

Formulation

PBS with 0.02% sodium azide and 50% glycerol pH 7.3.

Storage

Store at -20°C. DO NOT ALIQUOT

Clonality

Polyclonal

Ig Type

Rabbit IgG

Applications

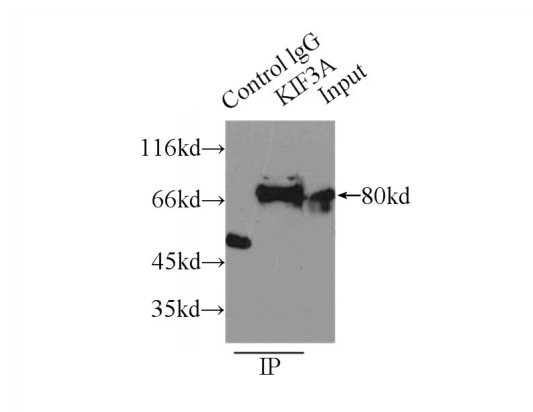
ELISA, WB, IHC, IP

Dilutions

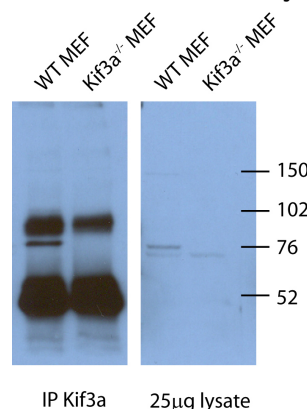
Recommended Dilution:

WB: 1:200-1:2000

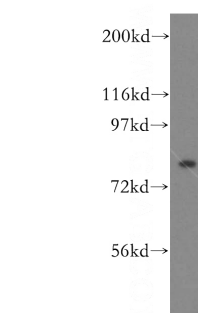
Validations



IP Result of anti-KIF3A (IP:Catalog No:112013, 4ug; Detection:Catalog No:112013 1:500) with mouse brain tissue lysate 8000ug.



WB and IP result of the antibody anti-KIF3A (Catalog No:112013) in mouse cell from Corbit,



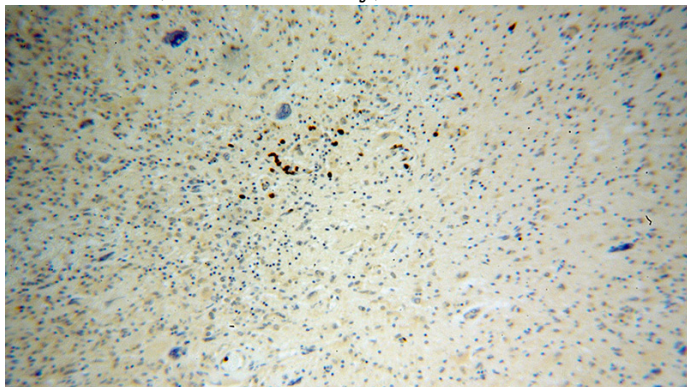
Kevin.

human cerebellum tissue were subjected to SDS PAGE followed by western blot with Catalog

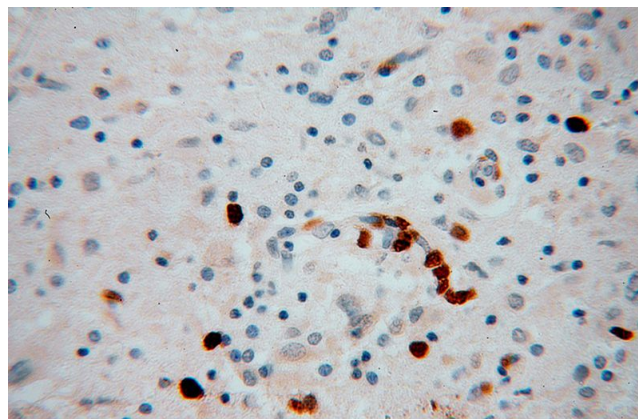
KIF3A antibody

Catalog Number: 112013

No:112013(KIF3A antibody) at dilution of 1:500



Immunohistochemical of paraffin-embedded human gliomas using Catalog No:112013(KIF3A antibody) at dilution of 1:100 (under 10x lens)



Immunohistochemical of paraffin-embedded human gliomas using Catalog No:112013(KIF3A antibody) at dilution of 1:100 (under 40x lens)