

# NUB1 antibody



Catalog Number: 113403

## Product name

NUB1 antibody

## Immunogen

[Human NUB1 Recombinant protein \(His tag\)](#)

## Specificity

Human, Mouse, Rat; other species not tested.

## Antibody description

NUB1 Rabbit Polyclonal antibody. Positive IP detected in HEK-293 cells. Positive WB detected in HeLa cells, COLO 320 cells, HepG2 cells, K-562 cells, mouse kidney tissue, Raji cells. Observed molecular weight by Western-blot: 69 kDa

## Preparation

This antibody was obtained by immunization of NUB1 recombinant protein (Accession Number: NM\_016118). Purification method: Antigen affinity purified.

## Formulation

PBS with 0.02% sodium azide and 50% glycerol pH 7.3.

## Storage

Store at -20°C. DO NOT ALIQUOT

## Clonality

Polyclonal

## Ig Type

Rabbit IgG

## Applications

ELISA, WB, IP

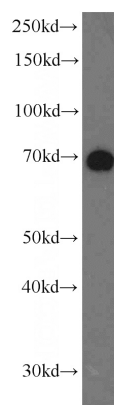
## Dilutions

Recommended Dilution:

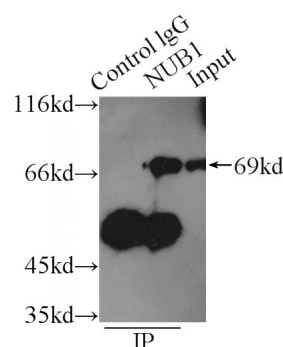
WB: 1:200-1:2000

IP: 1:200-1:2000

## Validations



HeLa cells were subjected to SDS PAGE followed by western blot with Catalog No:113403(NUB1 antibody) at dilution of 1:600



IP Result of anti-NUB1 (IP:Catalog No:113403, 3ug; Detection:Catalog No:113403 1:600) with HEK-293 cells lysate 2500ug.