

MMADHC antibody



Catalog Number: 112692

Product name

MMADHC antibody

Recommended Dilution:

WB: 1:200-1:2000

Immunogen

IHC: 1:20-1:200

[Human MMADHC Recombinant protein \(GST tag & His tag\)](#)

Validations

Specificity

Human; other species not tested.

Antibody description

MMADHC Rabbit Polyclonal antibody. Positive WB detected in HeLa cells. Positive IHC detected in human heart tissue, human pancreas tissue. Observed molecular weight by Western-blot: 33 kDa

Preparation

This antibody was obtained by immunization of MMADHC recombinant protein (Accession Number: NM_015702). Purification method: Antigen affinity purified.

Formulation

PBS with 0.02% sodium azide and 50% glycerol pH 7.3.

Storage

Store at -20°C. DO NOT ALIQUOT

Clonality

Polyclonal

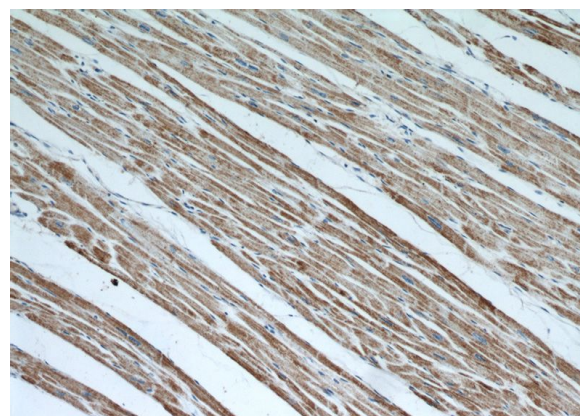
Ig Type

Rabbit IgG

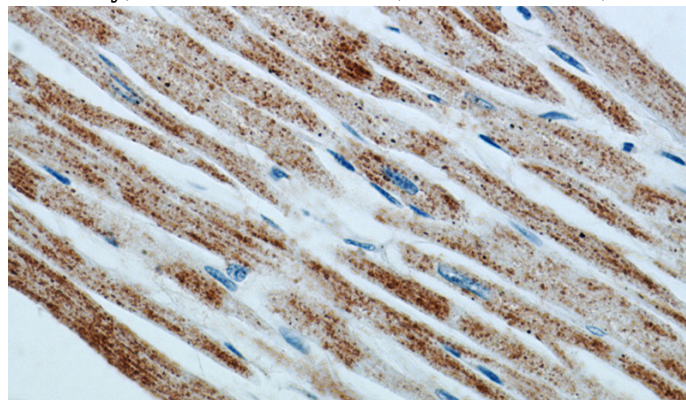
Applications

ELISA, IHC, WB

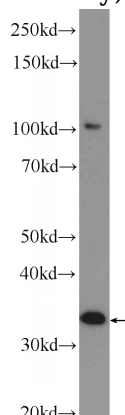
Dilutions



Immunohistochemical of paraffin-embedded human heart using Catalog No:112692(MMADHC antibody) at dilution of 1:50 (under 10x lens)



Immunohistochemical of paraffin-embedded human heart using Catalog No:112692(MMADHC antibody) at dilution of 1:50 (under 40x lens)



MMADHC antibody



Catalog Number: 112692

HeLa cells were subjected to SDS PAGE followed by western blot with Catalog

No:112692(MMADHC Antibody) at dilution of 1:600