

# Anti-MAPK13 (G181) Rabbit antibody



Catalog Number: 166992

## Product name

Anti-MAPK13 (G181) Rabbit antibody

## Specificity

Human, Mouse

## Antibody description

MAPK13 (G181) Rabbit polyclonal antibody

## Preparation

Antigen: Peptide sequence around aa. 180~184 (T-G-Y-V-A) derived from human p38 MAPK.

## Formulation

Supplied at 1.0mg/mL in phosphate buffered saline (without Mg<sup>2+</sup> and Ca<sup>2+</sup>), pH 7.4, 150mM NaCl, 0.02% sodium azide and 50% glycerol.

## Storage

Store at 4°C short term. Store at -20°C long term. Avoid freeze / thaw cycle.

## Clonality

Polyclonal

## Ig Type

Rabbit IgG

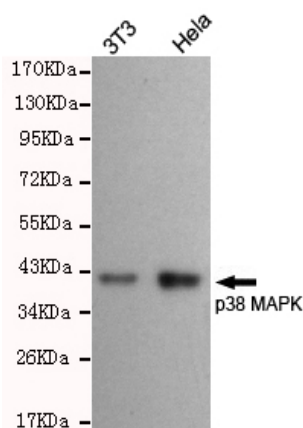
## Applications

WB

## Dilutions

WB:1/300

## Validations



Western blot detection of p38 MAPK in 3T3 and HeLa cell lysates using p38 MAPK rabbit pAb (dilution 1:300). Predicted band size: 43KDa. Observed band size: 43KDa.