

# CSDE1 antibody



Catalog Number: 109592

## Product name

CSDE1 antibody

## Immunogen

[Human UNR; CSDE1 Recombinant protein \(GST tag & His tag\)](#)

## Specificity

Human, Mouse; other species not tested.

## Antibody description

CSDE1 Rabbit Polyclonal antibody. Positive IHC detected in human skin cancer tissue, human testis tissue. Positive IF detected in HeLa cells. Positive WB detected in HeLa cells, A431 cells, HEK-293 cells. Observed molecular weight by Western-blot: 89kd

## Preparation

This antibody was obtained by immunization of CSDE1 recombinant protein (Accession Number: NM\_001242893). Purification method: Antigen affinity purified.

## Formulation

PBS with 0.02% sodium azide and 50% glycerol pH 7.3.

## Storage

Store at -20°C. DO NOT ALIQUOT

## Clonality

Polyclonal

## Ig Type

Rabbit IgG

## Applications

ELISA, WB, IHC, IF

## Dilutions

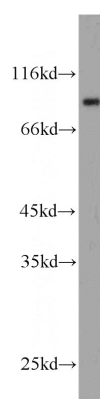
Recommended Dilution:

WB: 1:500-1:5000

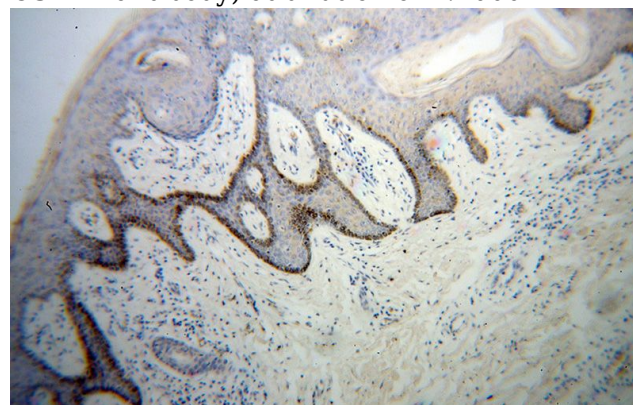
IHC: 1:20-1:200

IF: 1:20-1:200

## Validations



HeLa cells were subjected to SDS PAGE followed by western blot with Catalog No:109592(UNR; CSDE1 antibody) at dilution of 1:1000

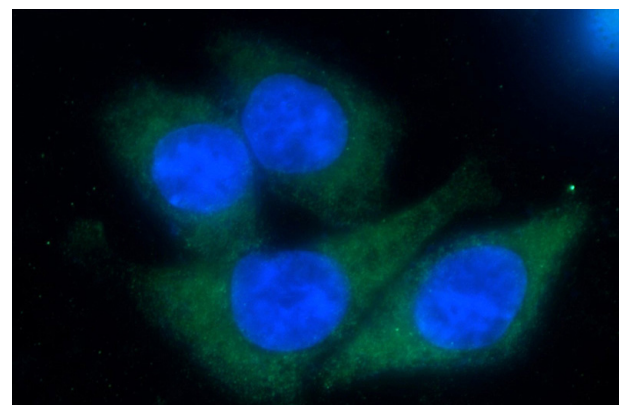
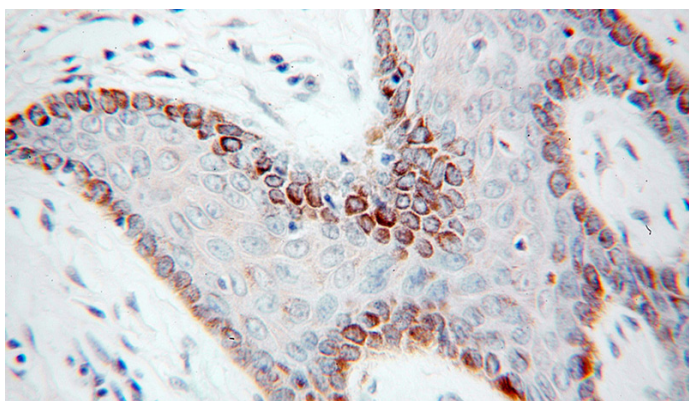


Immunohistochemical of paraffin-embedded human skin cancer using Catalog No:109592(UNR; CSDE1 antibody) at dilution of 1:50 (under 10x lens)

# CSDE1 antibody

Catalog Number: 109592

---



Immunohistochemical of paraffin-embedded human skin cancer using Catalog No:109592(UNR; CSDE1 antibody) at dilution of 1:50 (under 40x lens)

Immunofluorescent analysis of HeLa cells using Catalog No:109592(UNR; CSDE1 Antibody) at dilution of 1:50 and Alexa Fluor 488-conjugated AffiniPure Goat Anti-Rabbit IgG(H+L)