

Anti-HECA antibody



Catalog Number: 175492

Product name

Anti-HECA antibody

IHC-P:1:400-800

IHC-F:1:400-800

Specificity

Human, Mouse, Rat, Dog, Pig, Cow, Horse, Rabbit, Sheep

IF:1:50-200

Validations

Antibody description

Rabbit polyclonal antibody to HECA

Preparation

This antigen of this antibody was klh conjugated synthetic peptide derived from human heca 231-330/543

Formulation

Liquid, 0.01M TBS(pH7.4) with 1% BSA, 0.03% Proclin300 and 50% Glycerol.

Storage

Store at -20°C for one year. Avoid repeated freeze/thaw cycles. The lyophilized antibody is stable at room temperature for at least one month and for greater than a year when kept at -20°C. When reconstituted in sterile pH 7.4 0.01M PBS or diluent of antibody the antibody is stable for at least two weeks at 2-4°C.

Clonality

Polyclonal

Ig Type

Rabbit IgG

Applications

WB, IHC-P, ICC/IF

Dilutions

WB:1:500-2000

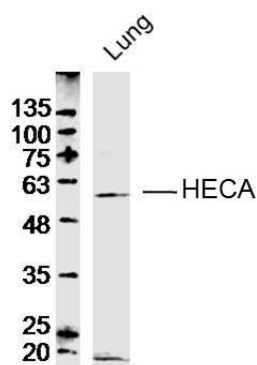


Fig1: Sample: Lung (Rat) Lysate at 40 ug; Primary: Anti-HECA at 1/300 dilution; Secondary: IRDye800CW Goat Anti-Rabbit IgG at 1/20000 dilution; Predicted band size: 59 kD; Observed band size: 59 kD

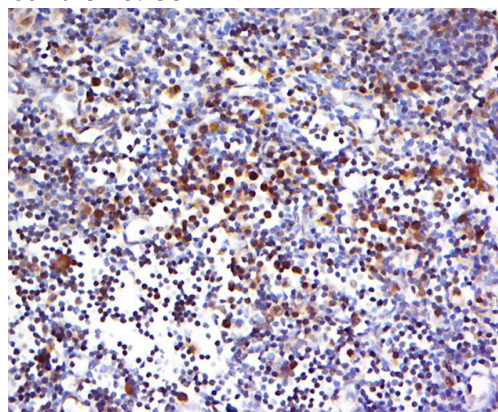


Fig2: Tissue/cell: rat pancreas tissue; 4% Paraformaldehyde-fixed and paraffin-embedded;; Antigen retrieval: citrate buffer (0.01M, pH 6.0), Boiling bathing for 15min; Block endogenous peroxidase by 3% Hydrogen peroxide for 30min; Blocking buffer (normal goat serum,C-0005) at 37°C for 20 min;; Incubation: Anti-HECA Polyclonal Antibody, Unconjugated 1:500, overnight at 4°C, followed by conjugation to the secondary antibody(SP-0023) and DAB(C-0010) staining