

MAT1A antibody



Catalog Number: 112492

Product name

MAT1A antibody

Recommended Dilution:

WB: 1:1000-1:10000

Immunogen

[Human MAT1A Recombinant protein \(GST tag & His tag\)](#)

IHC: 1:20-1:200

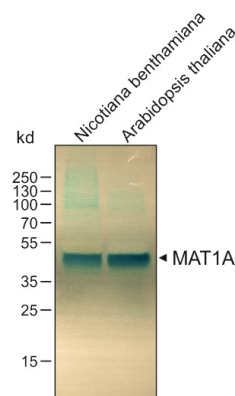
Validations

Specificity

Human, Mouse, Rat; other species not tested.

Antibody description

MAT1A Rabbit Polyclonal antibody. Positive WB detected in mouse liver tissue, arabidopsis whole plant, HepG2 cells. Positive IHC detected in human lung tissue. Observed molecular weight by Western-blot: 44-55kd



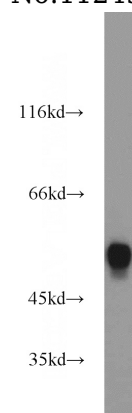
Preparation

This antibody was obtained by immunization of MAT1A recombinant protein (Accession Number: XM_005269842). Purification method: Antigen affinity purified.

WB result of MAT1A antibody (Catalog No:112492, 1:5000) with plant leaf tissue samples.

Formulation

PBS with 0.1% sodium azide and 50% glycerol pH 7.3.



Storage

Store at -20°C. DO NOT ALIQUOT

mouse liver tissue were subjected to SDS PAGE followed by western blot with Catalog No:112492(MAT1A antibody) at dilution of 1:1000

Clonality

Polyclonal

Ig Type

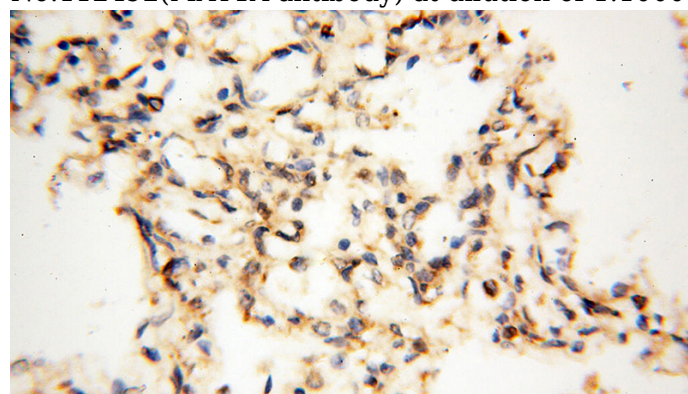
Rabbit IgG

Applications

ELISA, WB, IHC

Dilutions

Immunohistochemical of paraffin-embedded



MAT1A antibody



Catalog Number: 112492

human lung using Catalog No:112492(MAT1A antibody) at dilution of 1:200 (under 40x lens)