

# HMOX2 antibody



Catalog Number: 111492

## Product name

HMOX2 antibody

Recommended Dilution:

WB: 1:200-1:2000

## Immunogen

[Human HMOX2 Recombinant protein \(His tag\)](#)

IP: 1:200-1:2000

## Specificity

Human, Mouse, Rat; other species not tested.

IHC: 1:20-1:200

IF: 1:20-1:200

## Antibody description

HMOX2 Rabbit Polyclonal antibody. Positive IP detected in Raji cells. Positive WB detected in HepG2 cells, K-562 cells, mouse spleen tissue, Raji cells. Positive IHC detected in human lymphoma tissue. Positive IF detected in Hela cells. Observed molecular weight by Western-blot: 36 kDa

## Preparation

This antibody was obtained by immunization of HMOX2 recombinant protein (Accession Number: XM\_017023196). Purification method: Antigen affinity purified.

## Formulation

PBS with 0.02% sodium azide and 50% glycerol pH 7.3.

## Storage

Store at -20°C. DO NOT ALIQUOT

## Clonality

Polyclonal

## Ig Type

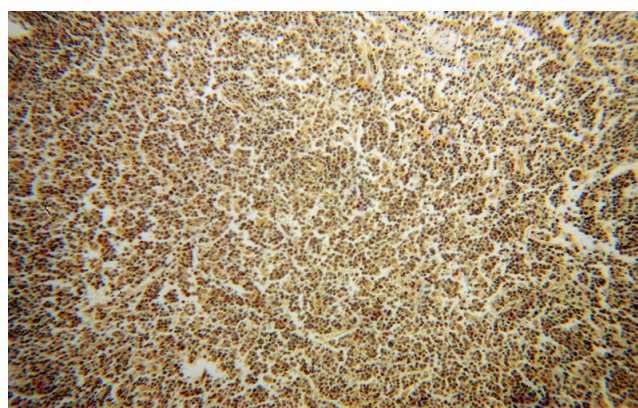
Rabbit IgG

## Applications

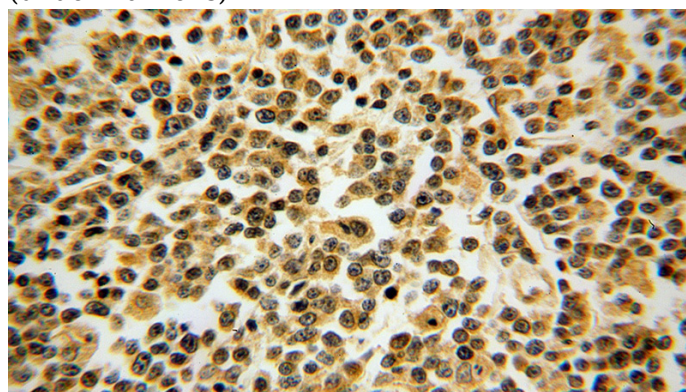
ELISA, IHC, IF, WB, IP

## Dilutions

## Validations



Immunohistochemical of paraffin-embedded human lymphoma using Catalog No:111492(HMOX2 antibody) at dilution of 1:100 (under 10x lens)

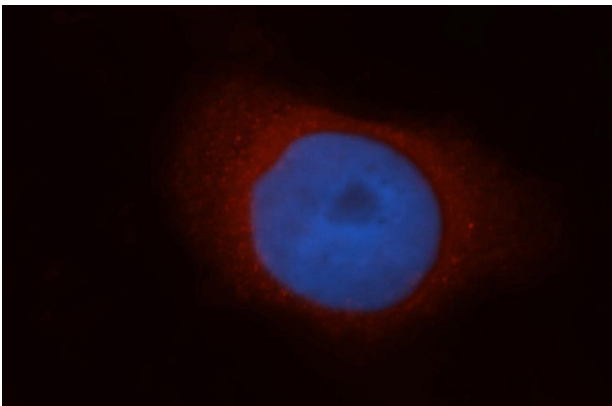


Immunohistochemical of paraffin-embedded human lymphoma using Catalog No:111492(HMOX2 antibody) at dilution of 1:100 (under 40x lens)

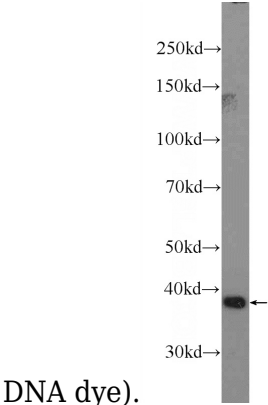
# HMOX2 antibody



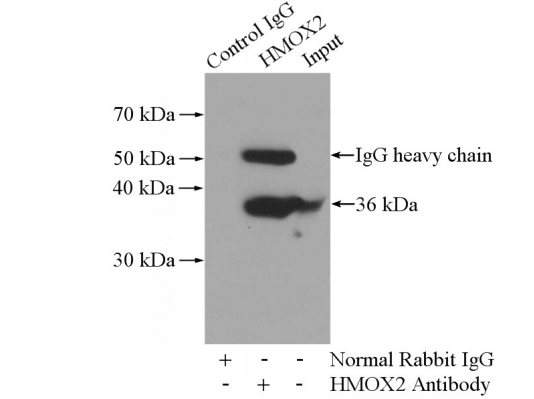
Catalog Number: 111492



Immunofluorescent analysis of HeLa cells, using HMOX2 antibody Catalog No:111492 at 1:50 dilution and Rhodamine-labeled goat anti-rabbit IgG (red). Blue pseudocolor = DAPI (fluorescent



HepG2 cells were subjected to SDS PAGE followed by western blot with Catalog No:111492(HMOX2 Antibody) at dilution of 1:600



IP Result of anti-HMOX2 (IP:Catalog No:111492, 4ug; Detection:Catalog No:111492 1:500) with Raji cells lysate 2000ug.