

Anti-Hexokinase 1 Rabbit antibody



Catalog Number: 166982

Product name

Anti-Hexokinase 1 Rabbit antibody

WB: 1/1000-1/5000

IHC: 1/20

Specificity

Human, Mouse, Rat

ICC/IF: 1/20

FC: 1/20-1/100

Antibody description

Hexokinase 1 Rabbit polyclonal antibody

Validations

Preparation

Antigen: A synthetic peptide of human Hexokinase 1

Formulation

Supplied in 50nM Tris-Glycine(pH 7.4), 0.15M NaCl, 40%Glycerol, 0.01% sodium azide and 0.05% BSA.

Storage

Store at -20°C. Stable for 12 months from date of receipt.

Clonality

Polyclonal

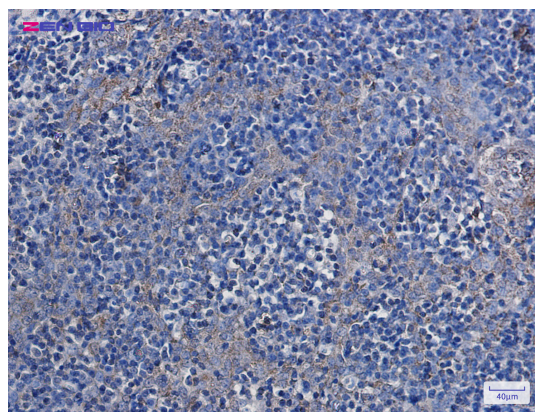
Ig Type

Rabbit IgG

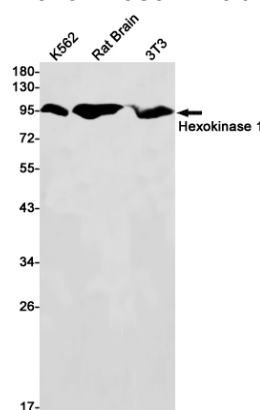
Applications

WB, IHC-P, ICC/IF, FC

Dilutions



Immunohistochemistry of Hexokinase 1 in paraffin-embedded Human tonsil using Hexokinase 1 Rabbit pAb at dilution 1/20



Western blot detection of Hexokinase 1 in K562, Rat Brain, 3T3 cell lysates using Hexokinase 1 Rabbit pAb(1:1000 diluted). Predicted band size: 103kDa. Observed band size: 103kDa.