

# YBX1 antibody

Catalog Number: 116882

## Product name

YBX1 antibody

## Specificity

Human, Mouse; other species not tested.

## Antibody description

YBX1 Rabbit Polyclonal antibody. Positive IP detected in Jurkat cells. Positive WB detected in MCF7 cells, HEK-293 cells, HeLa cells, Jurkat cells, mouse spleen tissue. Positive IHC detected in human placenta tissue, human cervical cancer tissue. Positive IF detected in HeLa cells. Observed molecular weight by Western-blot: 50 kDa

## Preparation

This antibody was obtained by immunization of YBX1 recombinant protein (Accession Number: NM\_004559). Purification method: Antigen affinity purified.

## Formulation

PBS with 0.02% sodium azide and 50% glycerol pH 7.3.

## Storage

Store at -20°C. DO NOT ALIQUOT

## Clonality

Polyclonal

## Ig Type

Rabbit IgG

## Applications

ELISA, WB, IHC, IP, IF

## Dilutions

Recommended Dilution:

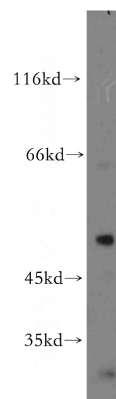
WB: 1:500-1:5000

IP: 1:200-1:2000

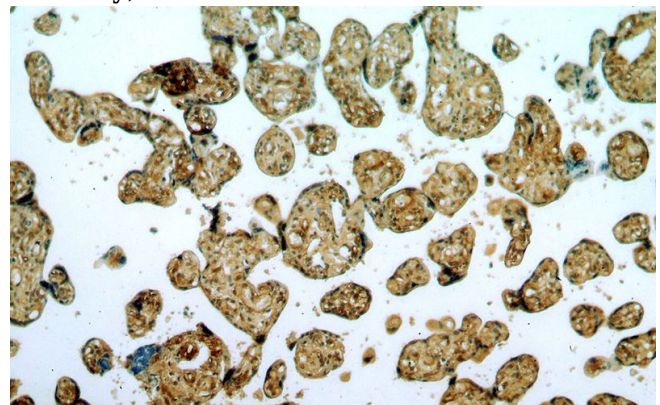
IHC: 1:20-1:200

IF: 1:20-1:200

## Validations



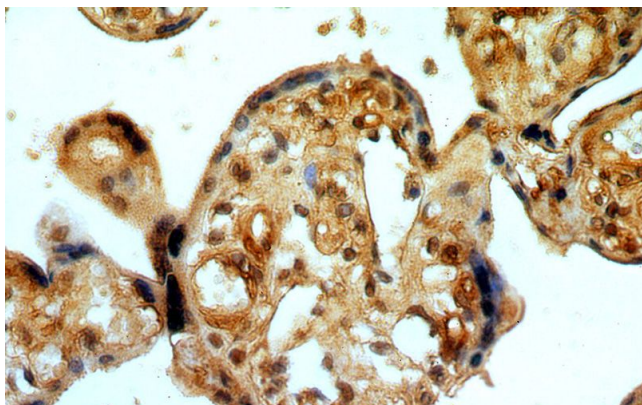
MCF7 cells were subjected to SDS PAGE followed by western blot with Catalog No:116882(YBX1 antibody) at dilution of 1:500



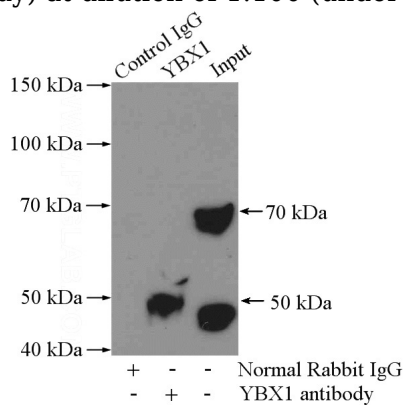
Immunohistochemical of paraffin-embedded human placenta using Catalog No:116882(YBX1 antibody) at dilution of 1:100 (under 10x lens)

# YBX1 antibody

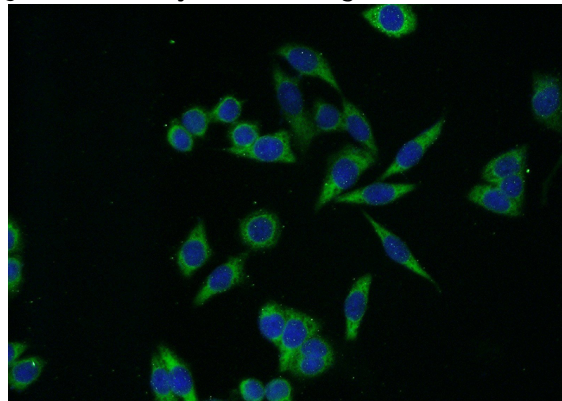
Catalog Number: 116882



Immunohistochemical of paraffin-embedded human placenta using Catalog No:116882(YBX1 antibody) at dilution of 1:100 (under 40x lens)



IP Result of anti-YBX1 (IP:Catalog No:116882, 4ug; Detection:Catalog No:116882 1:500) with Jurkat cells lysate 3080ug.



Immunofluorescent analysis of (-20oc Ethanol) fixed HeLa cells using Catalog No:116882(YBX1 Antibody) at dilution of 1:50 and Alexa Fluor 488-conjugated AffiniPure Goat Anti-Rabbit IgG(H+L)