

# ZGPAT Polyclonal Antibody



Catalog Number: 163272

## Product name

Rabbit IgG

ZGPAT Polyclonal Antibody

## Applications

## Specificity

WB

Rat

## Dilutions

## Antibody description

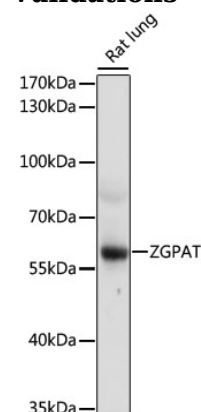
WB 1:500 - 1:2000

Polyclonal antibody to ZGPAT

## Preparation

## Validations

Antigen: Recombinant fusion protein containing a sequence corresponding to amino acids 212-511 of human ZGPAT (NP\_852150.2).



## Formulation

PBS with 0.02% sodium azide, 50% glycerol, pH7.3.

## Storage

Western blot - ZGPAT Polyclonal Antibody

Store at -20°C. Avoid freeze / thaw cycles.

## Clonality

Western blot analysis of extracts of rat lung, using ZGPAT antibody at 1:1000 dilution. Secondary antibody: HRP Goat Anti-Rabbit IgG (H+L) at 1:10000 dilution. Lysates/proteins: 25ug per lane. Blocking buffer: 3% nonfat dry milk in TBST. Detection: ECL Basic Kit. Exposure time: 3s.

Polyclonal

## Ig Type