

# WSB2 antibody

Catalog Number: 116972

## Product name

WSB2 antibody

## Specificity

Human, Mouse, Rat; other species not tested.

## Antibody description

WSB2 Rabbit Polyclonal antibody. Positive IP detected in mouse kidney tissue. Positive WB detected in mouse kidney tissue, human brain tissue, human kidney tissue, mouse uterus tissue. Positive IHC detected in human prostate cancer tissue. Positive IF detected in HepG2 cells. Observed molecular weight by Western-blot: 50 kDa

## Preparation

This antibody was obtained by immunization of WSB2 recombinant protein (Accession Number: NM\_018639). Purification method: Antigen affinity purified.

## Formulation

PBS with 0.1% sodium azide and 50% glycerol pH 7.3.

## Storage

Store at -20°C. DO NOT ALIQUOT

## Clonality

Polyclonal

## Ig Type

Rabbit IgG

## Applications

ELISA, WB, IHC, IF, IP

## Dilutions

Recommended Dilution:

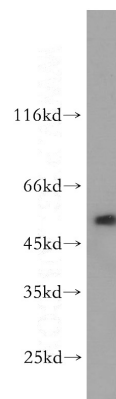
WB: 1:500-1:5000

IP: 1:200-1:2000

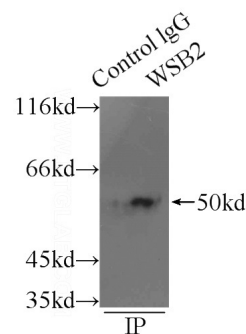
IHC: 1:20-1:200

IF: 1:10-1:100

## Validations



mouse kidney tissue were subjected to SDS PAGE followed by western blot with Catalog No:116972(WSB2 antibody) at dilution of 1:1000

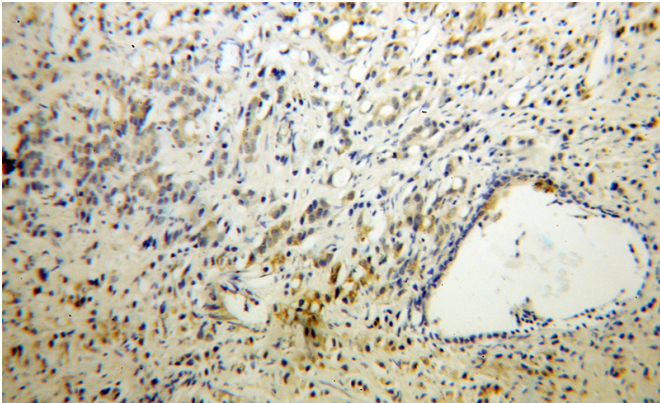


IP Result of anti-WSB2 (IP:Catalog No:116972, 3ug; Detection:Catalog No:116972 1:800) with mouse kidney tissue lysate 6000ug.

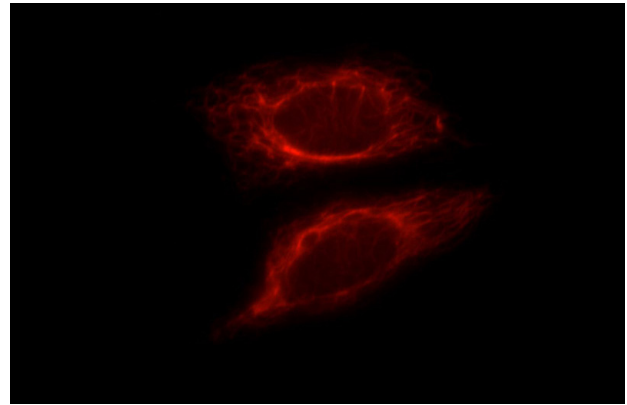
# WSB2 antibody

Catalog Number: 116972

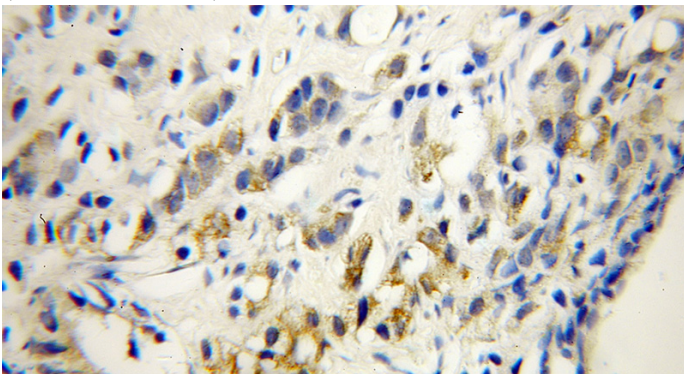
---



Immunohistochemical of paraffin-embedded human prostate cancer using Catalog No:116972(WSB2 antibody) at dilution of 1:50 (under 40x lens)



Immunohistochemical of paraffin-embedded human prostate cancer using Catalog No:116972(WSB2 antibody) at dilution of 1:50 (under 10x lens)



Immunofluorescent analysis of HepG2 cells, using WSB2 antibody Catalog No:116972 at 1:25 dilution and Rhodamine-labeled goat anti-rabbit IgG (red).